

Invitation to Bid on SCFC Timber

SFI / ATFS Certified Timber
Bids Will Open January 26, 2021, 10 am
Bids can be mailed, hand delivered, or emailed

All correspondence Must Reference Bid on Forest Products Sale **SHSF-4630-ADV-TS-21** and be in the format / form of: **one blended price per ton for all pine products.** Payment for volume / load tickets is to be made weekly.

Bidding Format Example

Buyers Name	SHSF-4630-ADV-TS-21	\$XX. ^{YY} per ton for all pine products
-------------	---------------------	---

Bids can be mailed to the address above or emailed to arabon@scfc.gov
The SC Forestry Commission reserves the right to reject any or all bids.

Sand Hills State Forest is certified through the Sustainable Forestry Initiative® (SFI) and The American Tree Farm System® (ATFS) standards. Our Sustainable Forestry Commitment is available on our website: <http://www.trees.sc.gov/sfistpcommitment.pdf>

The sale is located in Chesterfield County on the Sand Hills State Forest. See attached maps for details.

Approximate Total Tons Available <i>(Buyer is responsible for their own estimate)</i>	~ 7,800 tons	Performance Bond Required at Contract Signing	\$5,000 ⁰⁰
Total Acres to be Harvested	~317 ac.	Months to Complete Harvest Sale Ending Date	(12 mo.) February 15, 2022
Site Operability	Wet weather logging	Harvest Marked Boundaries	Red Paint
Harvesting Method	First Thinning (Third Row)	Potential specialty products	None
Site Restrictions	No harvesting in stands: SH013-0039, SH016-0114, SH016-0121 during RCW breeding season (April-July)		

For additional information, contact: Allen Rabon (Forest Technician), or Justin Smith (Assistant Director) at Sand Hills State Forest, 16218 HWY 1, Patrick, SC 29584 Email: arabon@scfc.gov, Telephone: (843) 498-6478.

Sale Requirements: A pre-logging conference must be scheduled between the State Forest Assistant Director, the buyer and a representative of the logger.

The successful bidder must comply with the SC Illegal Immigration Reform Act, 2008. This is done by signing a form available at the headquarters office, and may be signed on day of bid opening. Proof of commercial liability insurance for the amount of one million dollars (\$1,000,000.00) and workers compensation insurance is necessary before a contract can be signed. Contractors shall follow OSHA safety regulations and shall comply with all federal, state, and local laws as well as EPA Worker Protection Standards and Migrant and Seasonal Workers Protection Act, if applicable.

Best Management Practices: All work must also adhere to the SCFC BMP standards (see SCFC BMP Manual). A mandatory courtesy BMP exam from the SCFC BMP Forester is required on this site. At least one responsible person on the logging crew must be a graduate of the South Carolina Timber Operations Professional Program, or equivalent program such as NC Pro Logger or GA Master Timber Harvester.

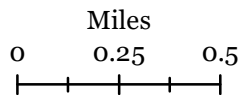
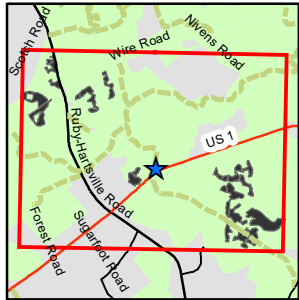
It will also be the buyers / loggers responsibility to obtain all necessary state and local permits and permission from DOT and any other pertinent entities prior to utilizing any state or local highway / road (or any other) shoulder / right of way associated with this tract. The buyer will also be responsible for performing all road work necessary to insure safe operation of 18 wheel logging trucks.



Sand Hills State Forest • 16218 Highway 1, Patrick, SC 29584 • PHONE: (843) 498-6478 • FAX: (843) 498-6705

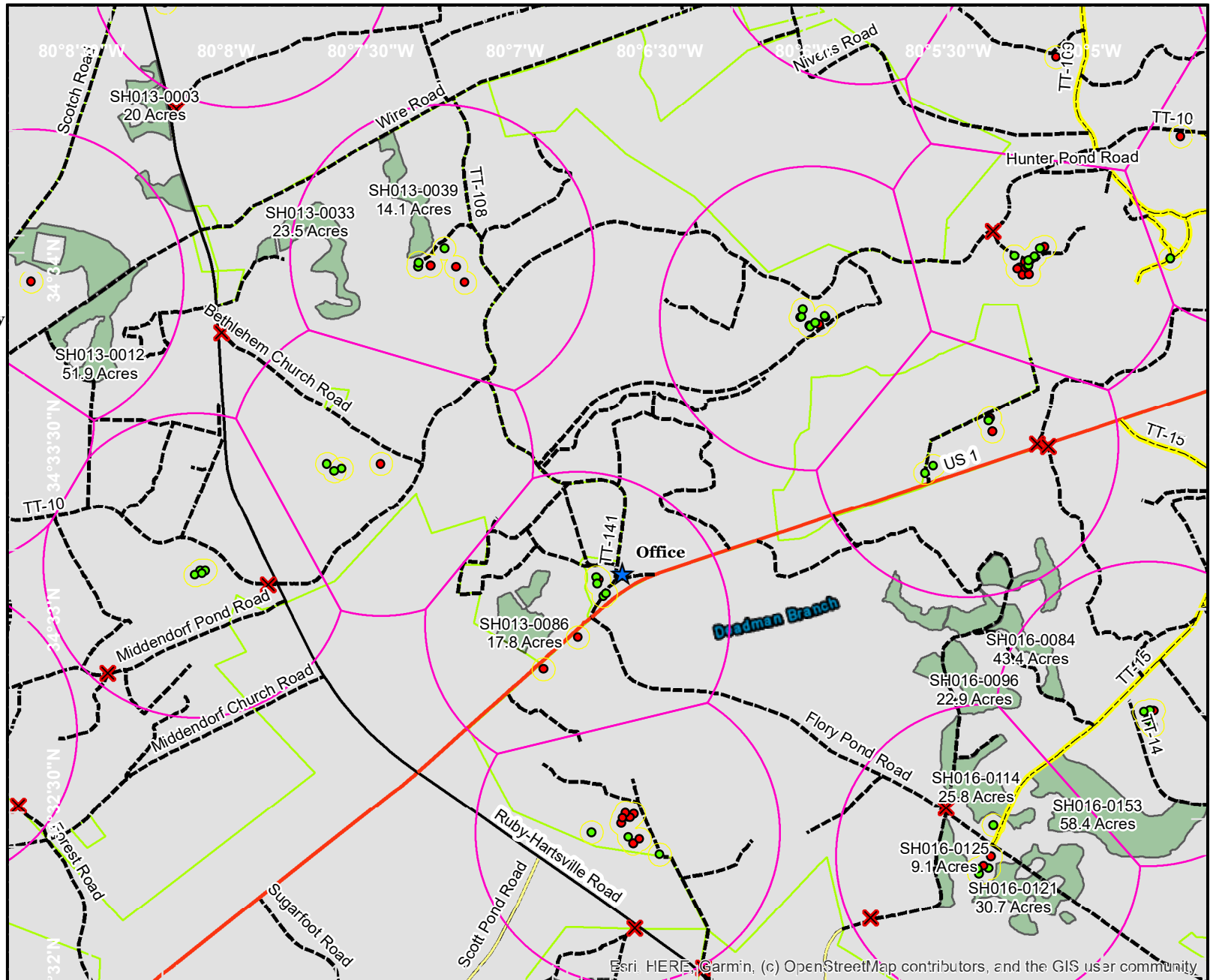
Sand Hills State Forest Advertised Timber Sale # 4630

- Sale Areas
- RCW Trees**
- Inactive
- Active
- Cavity Tree Buffer
- Half Mile Partition
- Office
- SCFC Gates
- Forest Road - Dirt
- Authorized Vehicles Only
- County Road - Pavement
- State Road
- US Highway
- State Forest Boundary



1:30,000

Disclaimer: This is a product of the South Carolina Forestry Commission GIS Department. Reasonable efforts have been made to ensure the accuracy of this map. The SCFC expressly disclaims responsibility for damages or liability that may arise from the use of this map.



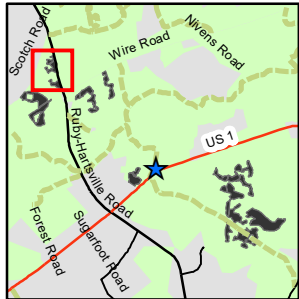
Esri, HERE, Garmin, (c) OpenStreetMap contributors, and the GIS user community



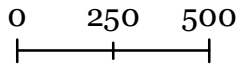
Sand Hills State Forest • 16218 Highway 1, Patrick, SC 29584 • PHONE: (843) 498-6478 • FAX: (843) 498-6705

**Sand Hills State Forest
Advertised Timber Sale
4630**

-  Sale Areas
-  Half Mile Partition
-  SCFC Gates
-  Forest Road - Dirt
-  State Road
-  State Forest Boundary



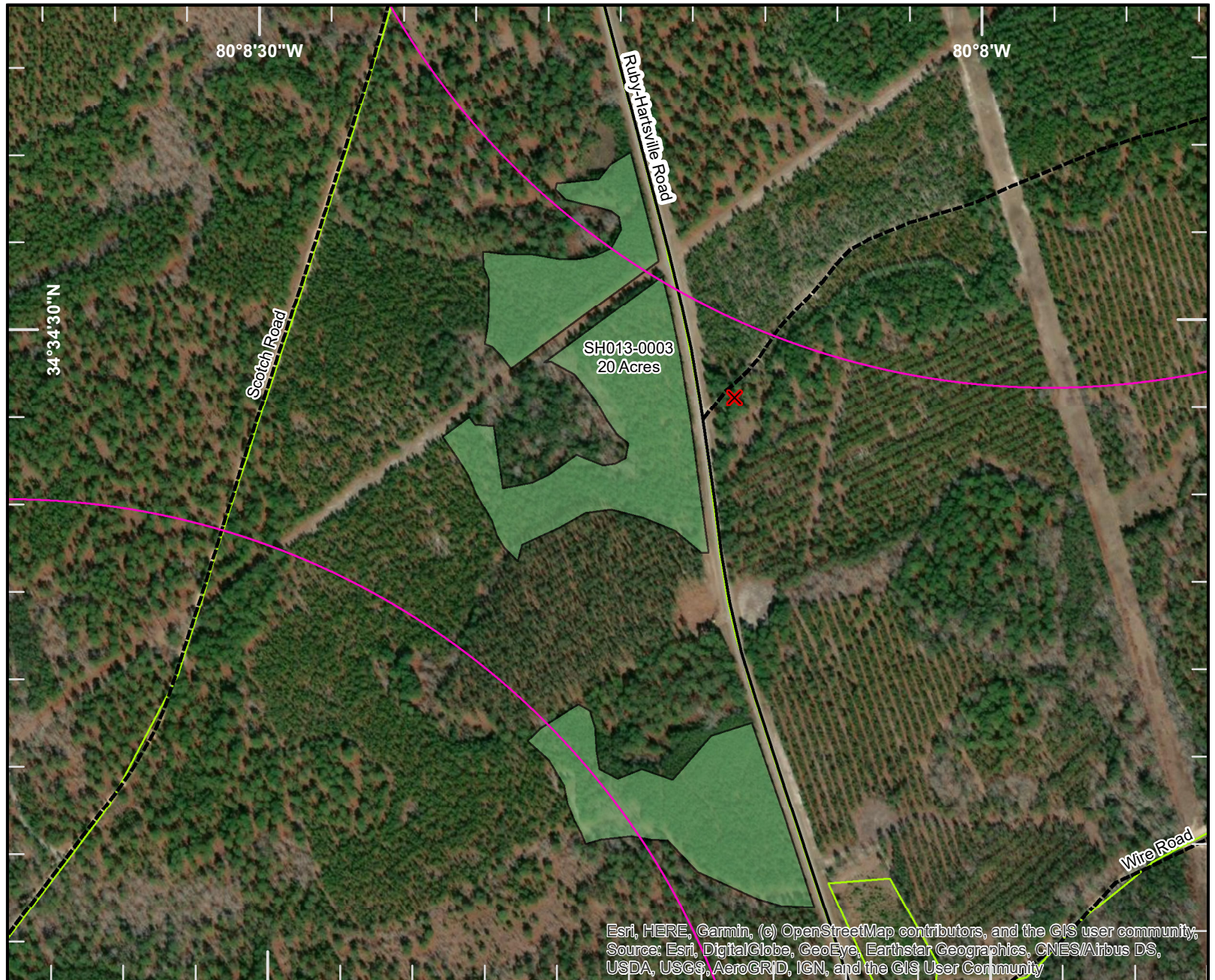
Feet



1:6,000

Disclaimer: This is a product of the South Carolina Forestry Commission GIS Department. Reasonable efforts have been made to ensure the accuracy of this map. The SCFC expressly disclaims responsibility for damages or liability that may arise from the use of this map.

Page 2 of 12



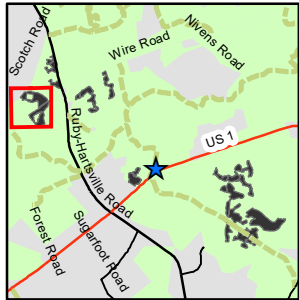
Esri, HERE, Garmin, (c) OpenStreetMap contributors, and the GIS user community;
Source: Esri, DigitalGlobe, GeoEye, Earthstar Geographics, CNES/Airbus DS,
USDA, USGS, AeroGRID, IGN, and the GIS User Community



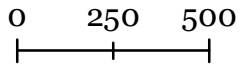
Sand Hills State Forest • 16218 Highway 1, Patrick, SC 29584 • PHONE: (843) 498-6478 • FAX: (843) 498-6705

**Sand Hills State Forest
Advertised Timber Sale
4630**

-  Sale Areas
- RCW Trees**
-  Inactive
-  Active
-  Cavity Tree Buffer
-  Half Mile Partition
-  SCFC Gates
-  Forest Road - Dirt
-  State Forest Boundary



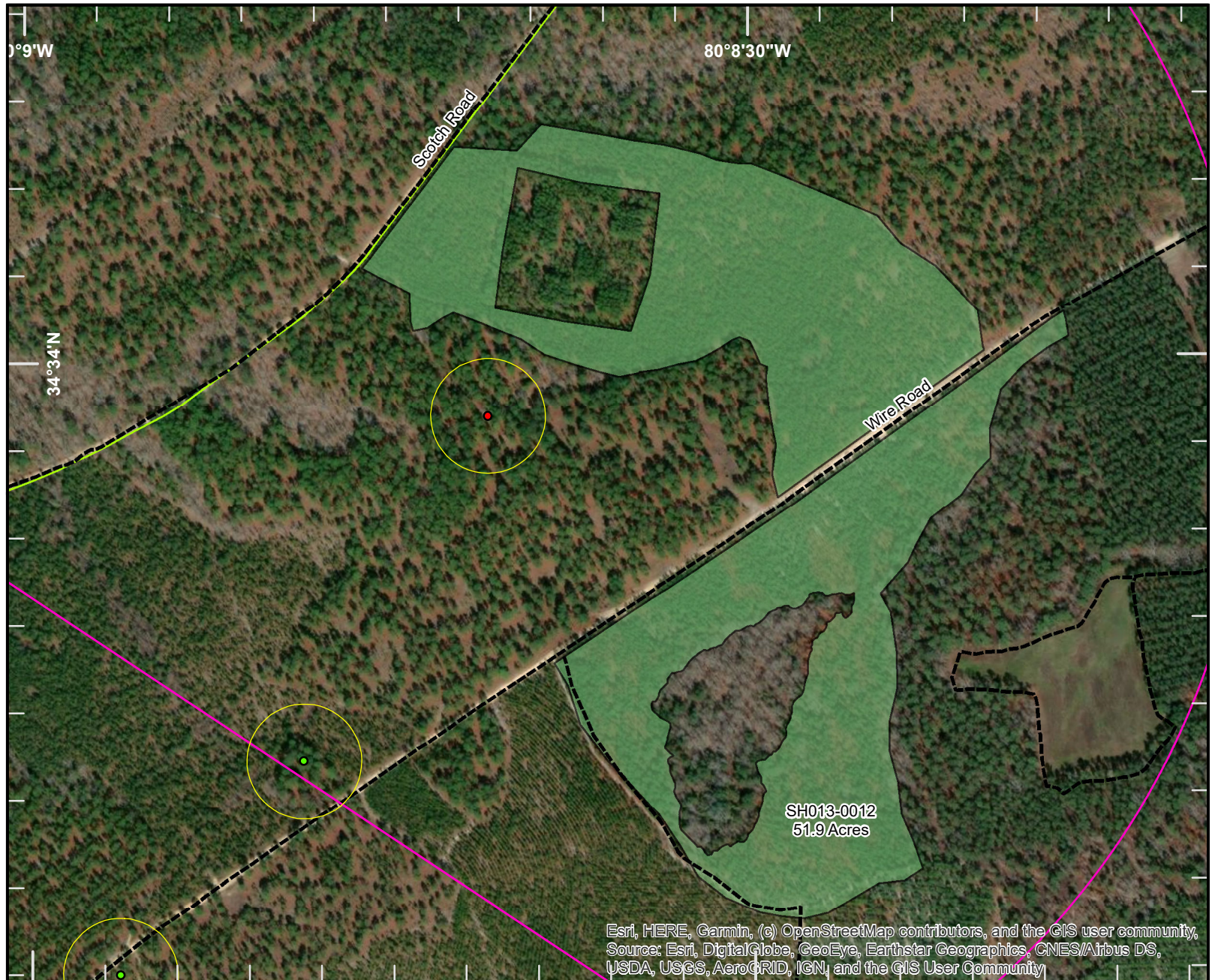
Feet



1:6,000

Disclaimer: This is a product of the South Carolina Forestry Commission GIS Department. Reasonable efforts have been made to ensure the accuracy of this map. The SCFC expressly disclaims responsibility for damages or liability that may arise from the use of this map.

Page 3 of 12











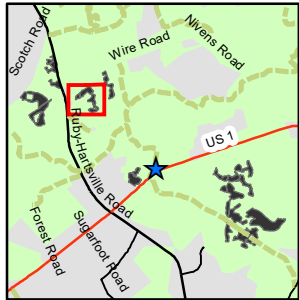
Esri, HERE, Garmin, (c) OpenStreetMap contributors, and the GIS user community, Source: Esri, DigitalGlobe, GeoEye, Earthstar Geographics, CNES/Airbus DS, USDA, USGS, AeroGRID, IGN, and the GIS User Community



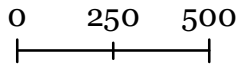
Sand Hills State Forest • 16218 Highway 1, Patrick, SC 29584 • PHONE: (843) 498-6478 • FAX: (843) 498-6705

**Sand Hills State Forest
Advertised Timber Sale
4630**

-  Sale Areas
- RCW Trees**
-  Active
-  Cavity Tree Buffer
-  Half Mile Partition
-  SCFC Gates
-  Forest Road - Dirt
-  State Road
-  State Forest Boundary



Feet



1:6,000

Disclaimer: This is a product of the South Carolina Forestry Commission GIS Department. Reasonable efforts have been made to ensure the accuracy of this map. The SCFC expressly disclaims responsibility for damages or liability that may arise from the use of this map.

Page 4 of 12



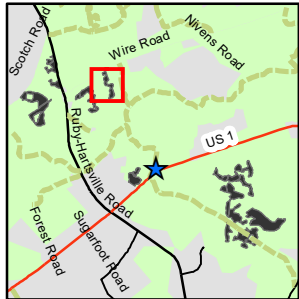
Esri, HERE, Garmin, (c) OpenStreetMap contributors, and the GIS user community, Source: Esri, DigitalGlobe, GeoEye, Earthstar Geographics, CNES/Airbus DS, USDA, USGS, AeroGRID, IGN, and the GIS User Community



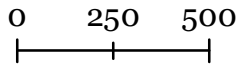
Sand Hills State Forest • 16218 Highway 1, Patrick, SC 29584 • PHONE: (843) 498-6478 • FAX: (843) 498-6705

**Sand Hills State Forest
Advertised Timber Sale
4630**

-  Sale Areas
- RCW Trees**
-  Inactive
-  Active
-  Cavity Tree Buffer
-  Half Mile Partition
-  SCFC Gates
-  Forest Road - Dirt
-  State Forest Boundary



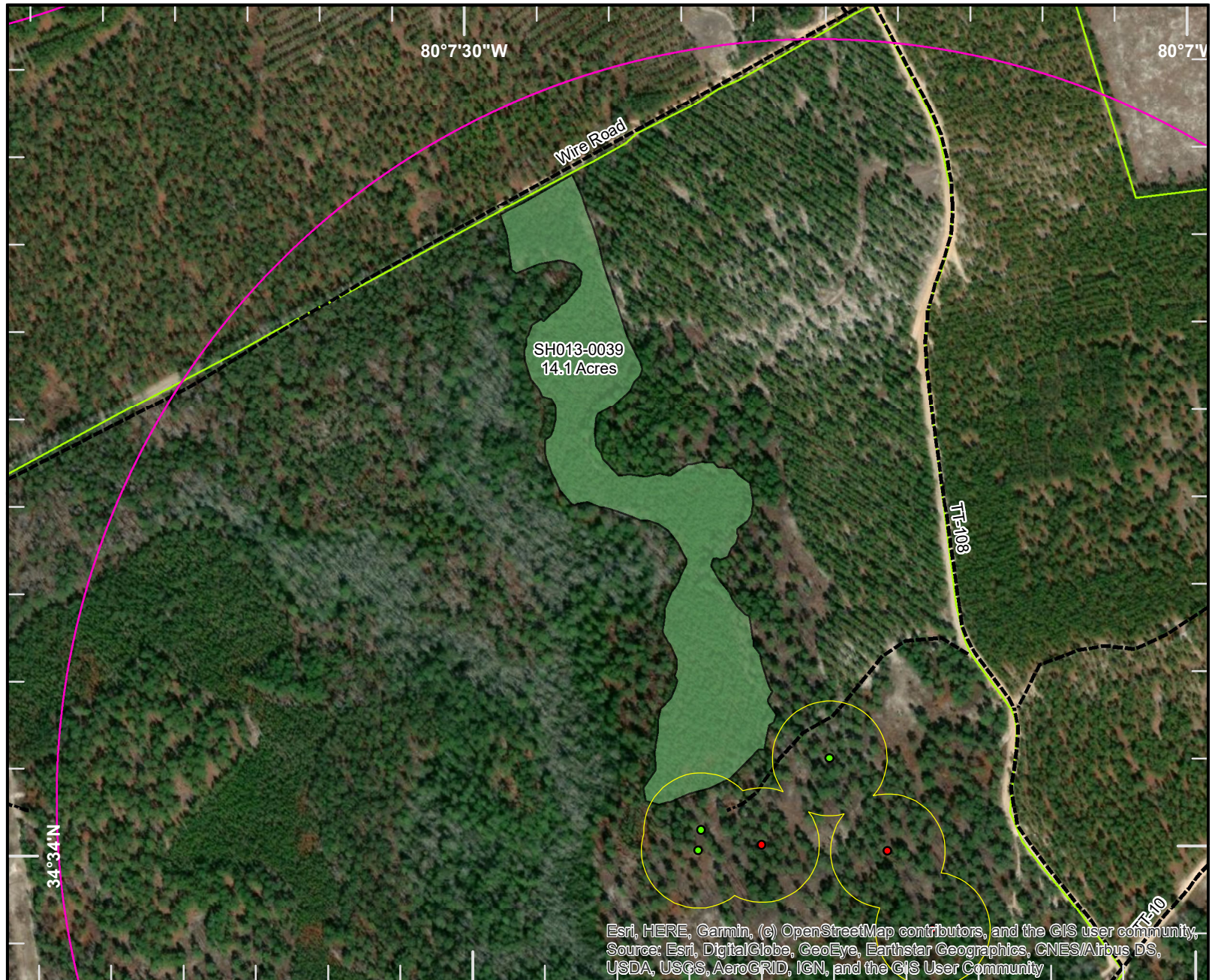
Feet



1:6,000

Disclaimer: This is a product of the South Carolina Forestry Commission GIS Department. Reasonable efforts have been made to ensure the accuracy of this map. The SCFC expressly disclaims responsibility for damages or liability that may arise from the use of this map.

Page 5 of 12



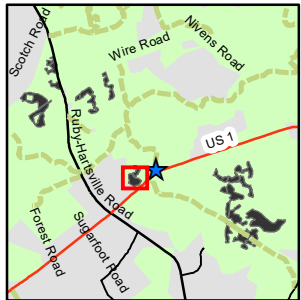
Esri, HERE, Garmin, (c) OpenStreetMap contributors, and the GIS user community, Source: Esri, DigitalGlobe, GeoEye, Earthstar Geographics, CNES/Airbus DS, USDA, USGS, AeroGRID, IGN, and the GIS User Community



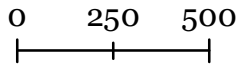
Sand Hills State Forest • 16218 Highway 1, Patrick, SC 29584 • PHONE: (843) 498-6478 • FAX: (843) 498-6705

**Sand Hills State Forest
Advertised Timber Sale
4630**

-  Sale Areas
- RCW Trees**
-  Inactive
-  Active
-  Cavity Tree Buffer
-  Half Mile Partition
-  Office
-  SCFC Gates
-  Forest Road - Dirt
-  US Highway
-  State Forest Boundary



Feet



1:6,000

Disclaimer: This is a product of the South Carolina Forestry Commission GIS Department. Reasonable efforts have been made to ensure the accuracy of this map. The SCFC expressly disclaims responsibility for damages or liability that may arise from the use of this map.

Page 6 of 12



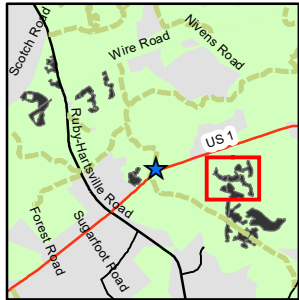
Esri, HERE, Garmin, (c) OpenStreetMap contributors, and the GIS user community,
Source: Esri, DigitalGlobe, GeoEye, Earthstar Geographics, CNES/Airbus DS,
USDA, USGS, AeroGRID, IGN, and the GIS User Community



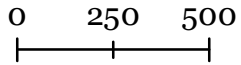
Sand Hills State Forest • 16218 Highway 1, Patrick, SC 29584 • PHONE: (843) 498-6478 • FAX: (843) 498-6705

**Sand Hills State Forest
Advertised Timber Sale
4630**

-  Sale Areas
-  Half Mile Partition
-  SCFC Gates
-  Forest Road - Dirt
-  State Forest Boundary



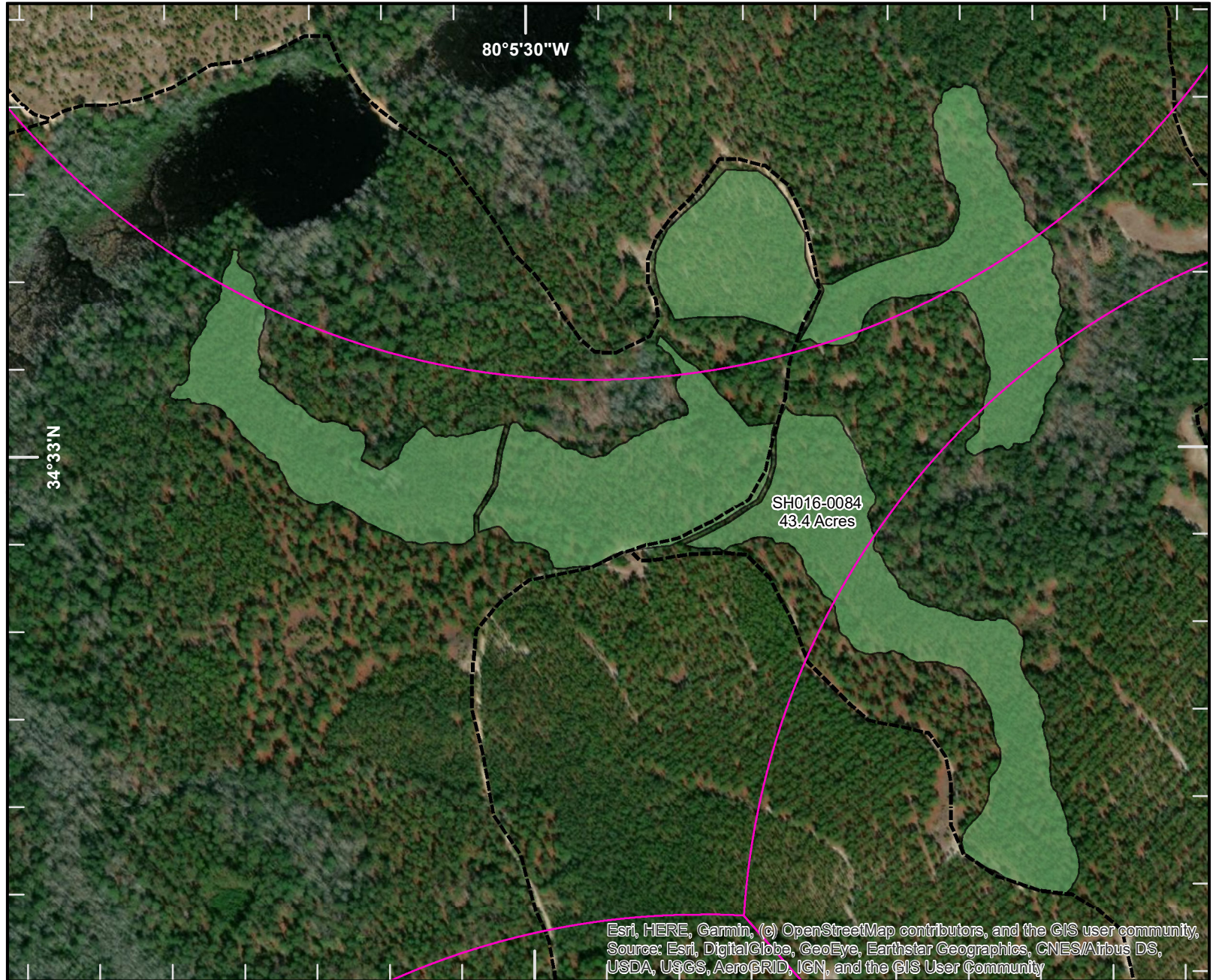
Feet



1:6,000

Disclaimer: This is a product of the South Carolina Forestry Commission GIS Department. Reasonable efforts have been made to ensure the accuracy of this map. The SCFC expressly disclaims responsibility for damages or liability that may arise from the use of this map.

Page 7 of 12



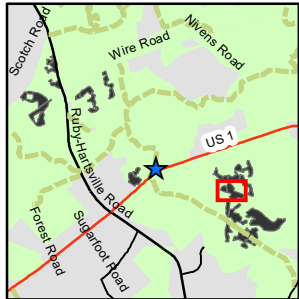
Esri, HERE, Garmin, (c) OpenStreetMap contributors, and the GIS user community, Source: Esri, DigitalGlobe, GeoEye, Earthstar Geographics, CNES/Airbus DS, USDA, USGS, AeroGRID, IGN, and the GIS User Community



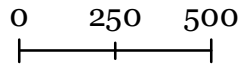
Sand Hills State Forest • 16218 Highway 1, Patrick, SC 29584 • PHONE: (843) 498-6478 • FAX: (843) 498-6705

**Sand Hills State Forest
Advertised Timber Sale
4630**

-  Sale Areas
-  Half Mile Partition
-  SCFC Gates
-  Forest Road - Dirt
-  Authorized Vehicles Only
-  State Forest Boundary



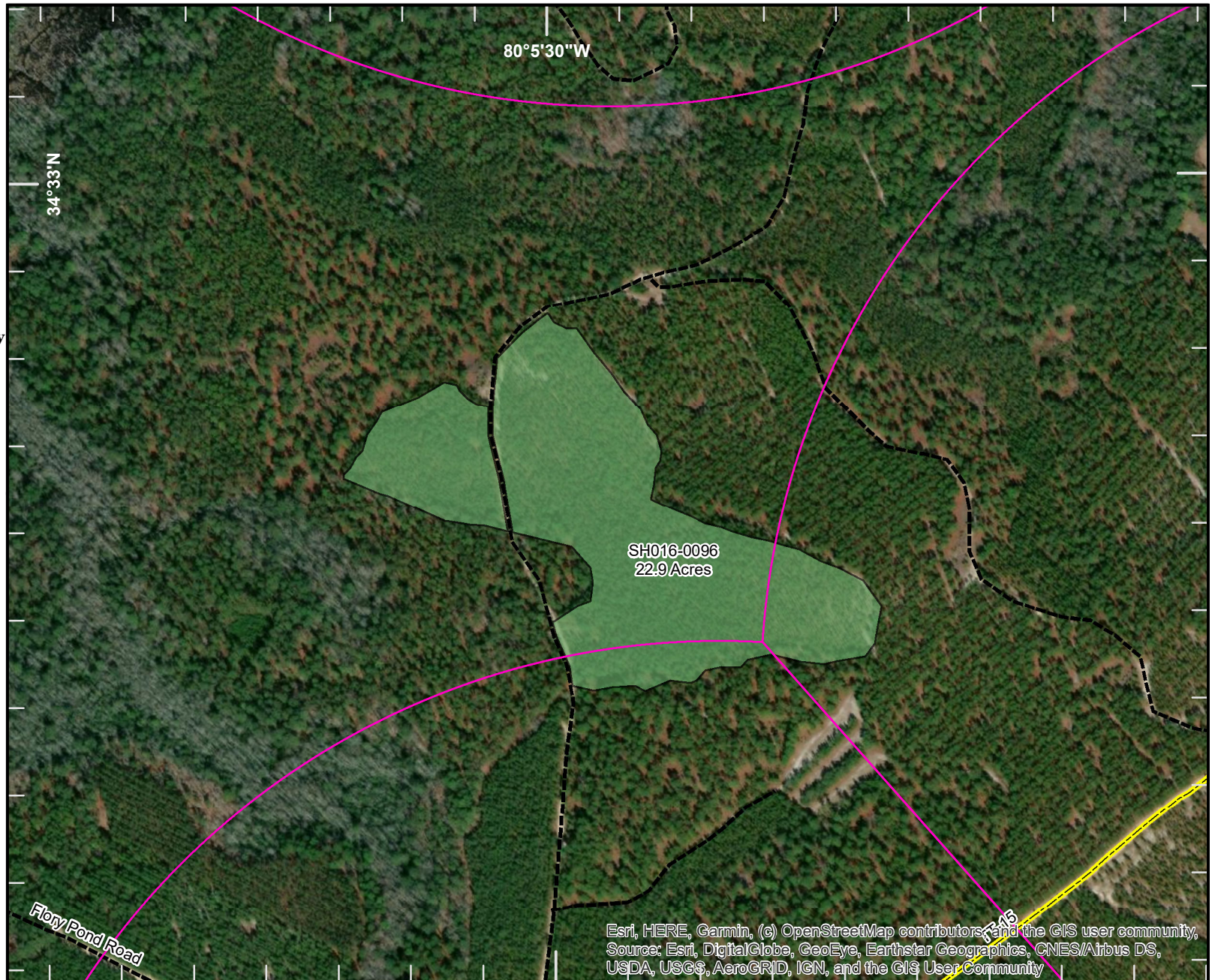
Feet



1:6,000

Disclaimer: This is a product of the South Carolina Forestry Commission GIS Department. Reasonable efforts have been made to ensure the accuracy of this map. The SCFC expressly disclaims responsibility for damages or liability that may arise from the use of this map.

Page 8 of 12




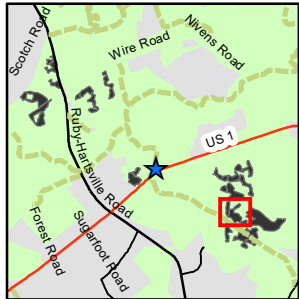
Esri, HERE, Garmin, (c) OpenStreetMap contributors, and the GIS user community, Source: Esri, DigitalGlobe, GeoEye, Earthstar Geographics, CNES/Airbus DS, USDA, USGS, AeroGRID, IGN, and the GIS User Community



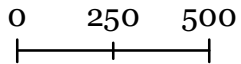
Sand Hills State Forest • 16218 Highway 1, Patrick, SC 29584 • PHONE: (843) 498-6478 • FAX: (843) 498-6705

**Sand Hills State Forest
Advertised Timber Sale
4630**

-  Sale Areas
- RCW Trees**
-  Inactive
-  Active
-  Cavity Tree Buffer
-  Half Mile Partition
-  SCFC Gates
-  Forest Road - Dirt
-  Authorized Vehicles Only
-  State Forest Boundary



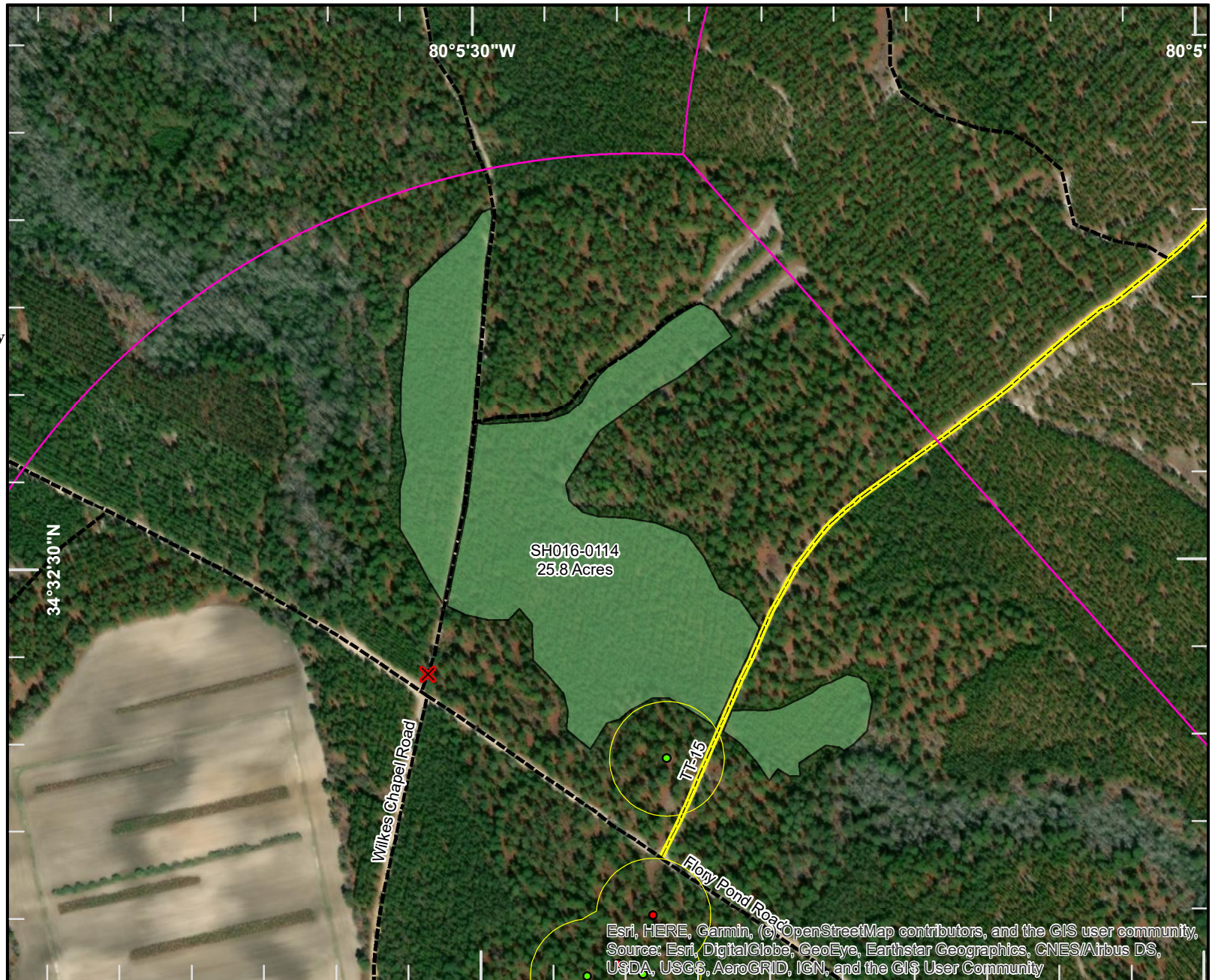
Feet



1:6,000

Disclaimer: This is a product of the South Carolina Forestry Commission GIS Department. Reasonable efforts have been made to ensure the accuracy of this map. The SCFC expressly disclaims responsibility for damages or liability that may arise from the use of this map.

Page 9 of 12








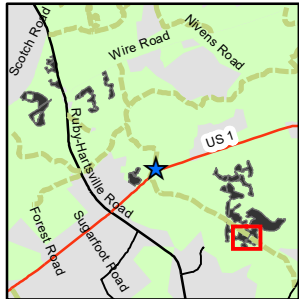
Esri, HERE, Garmin, (c) OpenStreetMap contributors, and the GIS user community, Source: Esri, DigitalGlobe, GeoEye, Earthstar Geographics, CNES/Airbus DS, USDA, USGS, AeroGRID, IGN, and the GIS User Community



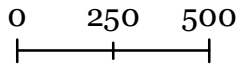
Sand Hills State Forest • 16218 Highway 1, Patrick, SC 29584 • PHONE: (843) 498-6478 • FAX: (843) 498-6705

**Sand Hills State Forest
Advertised Timber Sale
4630**

-  Sale Areas
- RCW Trees
 -  Inactive
 -  Active
-  Cavity Tree Buffer
-  Half Mile Partition
-  SCFC Gates
-  Forest Road - Dirt
-  Authorized Vehicles Only
-  State Forest Boundary



Feet



1:6,000

Disclaimer: This is a product of the South Carolina Forestry Commission GIS Department. Reasonable efforts have been made to ensure the accuracy of this map. The SCFC expressly disclaims responsibility for damages or liability that may arise from the use of this map.













Esri, HERE, Garmin, (c) OpenStreetMap contributors, and the GIS user community, Source: Esri, DigitalGlobe, GeoEye, Earthstar Geographics, CNES/Airbus DS, USDA, USGS, AeroGRID, IGN, and the GIS User Community



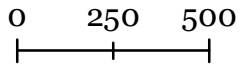
Sand Hills State Forest • 16218 Highway 1, Patrick, SC 29584 • PHONE: (843) 498-6478 • FAX: (843) 498-6705

**Sand Hills State Forest
Advertised Timber Sale
4630**

-  Sale Areas
- RCW Trees**
-  Inactive
-  Active
-  Cavity Tree Buffer
-  Half Mile Partition
-  SCFC Gates
-  Forest Road - Dirt
-  Authorized Vehicles Only
-  County Road - Pavement
-  State Forest Boundary



Feet



1:6,000

Disclaimer: This is a product of the South Carolina Forestry Commission GIS Department. Reasonable efforts have been made to ensure the accuracy of this map. The SCFC expressly disclaims responsibility for damages or liability that may arise from the use of this map.

Page 11 of 12



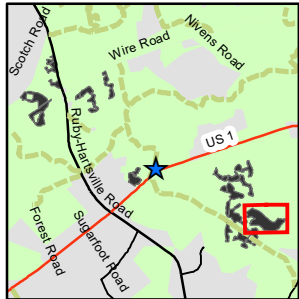
Esri, HERE, Garmin, (c) OpenStreetMap contributors, and the GIS user community, Source: Esri, DigitalGlobe, GeoEye, Earthstar Geographics, CNES/Airbus DS, USDA, USGS, AeroGRID, IGN, and the GIS User Community



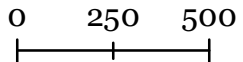
Sand Hills State Forest • 16218 Highway 1, Patrick, SC 29584 • PHONE: (843) 498-6478 • FAX: (843) 498-6705

**Sand Hills State Forest
Advertised Timber Sale
4630**

-  Sale Areas
- RCW Trees
 -  Inactive
 -  Active
-  Cavity Tree Buffer
-  Half Mile Partition
-  SCFC Gates
-  Forest Road - Dirt
-  Authorized Vehicles Only
-  State Forest Boundary



Feet



1:6,000

Disclaimer: This is a product of the South Carolina Forestry Commission GIS Department. Reasonable efforts have been made to ensure the accuracy of this map. The SCFC expressly disclaims responsibility for damages or liability that may arise from the use of this map.



Esri, HERE, Garmin, (c) OpenStreetMap contributors, and the GIS user community, Source: Esri, DigitalGlobe, GeoEye, Earthstar Geographics, CNES/Airbus DS, USDA, USGS, AeroGRID, IGN, and the GIS User Community