



2002-2003



South Carolina
DEPARTMENT OF
JUVENILE JUSTICE

Annual
Statistical
Report



DJJ



Bill Byars, Director

P.O. Box 21069
Columbia, SC 29221-1069
www.state.sc.us/djj



Mark Sanford
Governor
State of South Carolina

October 2003

To Our Readers:

I welcome this opportunity to introduce the Department of Juvenile Justice's (DJJ's) Annual Statistical Report for fiscal year 2002-2003. DJJ is the state agency responsible for administering South Carolina's juvenile justice system. Our core statutory responsibilities include:

- Intake processing of delinquency cases for the state's family courts;
- Operation of a secure detention center;
- Probation and aftercare (parole) supervision of juveniles in the community;
- Evaluation of juveniles prior to their final disposition, when so ordered by the court;
- Provision of specialized treatment and placement options; and
- Management of alternative programs and correctional facilities for youth committed to the agency's custody.

The Statistical Report highlights statewide figures and trends over time in its main body. For readers interested in more local information, the Appendix contains county-level tables. The report is both an accounting of the decisions made about delinquency cases as they flow through the system and a depiction of the juvenile offenders themselves as to their offense behaviors and demographic characteristics.

We are pleased to know of your interest in South Carolina's juvenile justice system. Should you have any questions or comments about this report, do not hesitate to contact us at (803) 896-7538.

Sincerely,
William R. Byars, Jr.
Director

Table of Contents

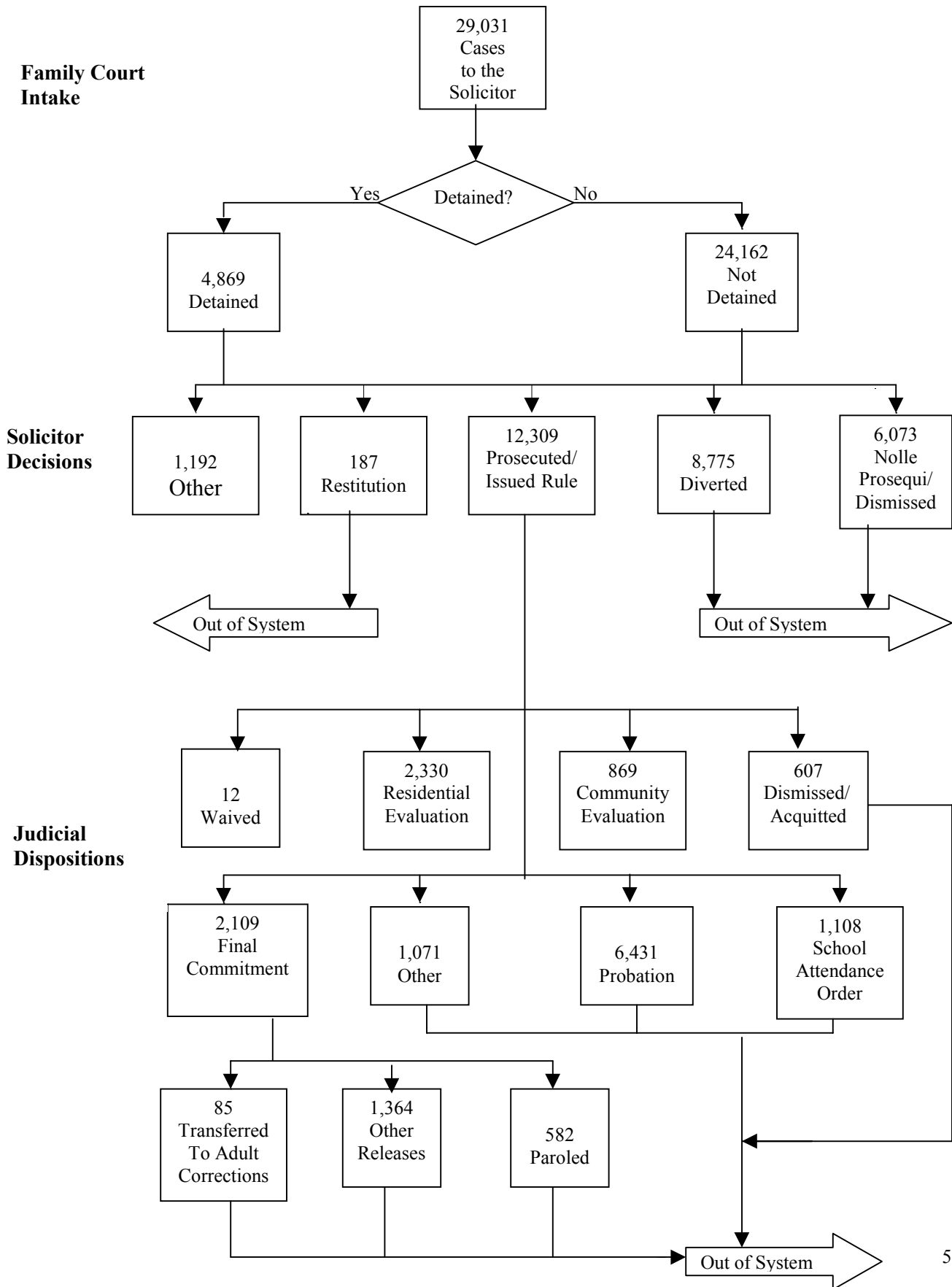
| | |
|--|-----------|
| Statistical Overview | 4 |
| South Carolina Juvenile Justice System..... | 5 |
| System Process and Flow | 6 |
| Juvenile Detention | 7 |
| Ten Most Frequent Offenses Associated with Detention | 8 |
| Juvenile Cases to the Solicitor | 9 |
| Violent and Serious Juvenile Cases - 10-Year Comparison..... | 10 |
| Counties with Increases in Juvenile Cases | 11 |
| Ten Most Frequent Offenses Associated with Juvenile Cases..... | 12 |
| Solicitor Decisions in Juvenile Cases..... | 13 |
| Family Court Judicial Dispositions in Juvenile Cases | 14 |
| Ten Most Frequent Offenses Associated with Probation | 15 |
| Community Case Services | 16 |
| Juvenile Restitution Orders | 17 |
| Commitments | 18 |
| Ten Most Frequent Offenses Associated with Commitment..... | 19 |
| Average Daily Populations | 20 |
| Commitments and Average Daily Populations –10-Year Retrospective | 21 |
| Population Profiles Over a 10-Year Span | 22 |
| Juvenile Offender Profiles | 23 |
| African-American Overrepresentation | 24 |
| Appendix Tables Pages 25 – 32..... | 25 |

Statistical Overview for Fiscal Year 2002-2003

- In fiscal year 2002-2003, the South Carolina Department of Juvenile Justice (DJJ) processed 29,031 juvenile cases, reflecting a stable trend over the five-year period beginning in 1998-99.
- It is important to note that the number of juvenile cases classified as violent and serious remained stable between 1998-99 and 2002-03. The five-year trend line is substantially below the peak years of 1993-94 and 1994-95.
- The top offenses associated with juvenile delinquents at referral to the family court included disturbing schools, ranked first with 2,658 cases, truancy, second with 2,269 cases, and simple assault and battery, third with 2,068 cases. Shoplifting and contempt of court rounded out the top five.
- At the solicitor level, 45 percent of cases moved forward to the family court based on decisions to prosecute or issue rule to show cause petitions. Thirty-two percent (32%) of cases were diverted, often through the use of arbitration as an alternative to prosecution. Solicitors dismissed or chose not to prosecute 22 percent of cases. The remaining 1 percent were resolved through restitution.
- Fifty-eight percent (58%) of juveniles whose cases were heard in the family court received dispositions of probation. Seventeen percent (17%) of cases resulted in commitment to DJJ custody, and 10 percent in orders to attend school. The balance of cases were dismissed, acquitted or disposed in some other manner.
- Juvenile case resolutions included 976 orders to pay monetary restitution to victims. The total amount ordered was \$558,030.
- Juvenile case resolutions also included 3,002 orders to perform community service restitution. The total number of hours of service reflected in these orders was 101,746.
- DJJ received 2,330 temporary commitments to its residential evaluation centers in 2002-03. The number peaked in 1998-99 with 2,734 commitments, and has declined each year since then.
- DJJ received 2,109 juveniles into its orientation and assessment program for placement in commitment facilities and programs in 2002-03, showing a slight increase (5 percent) since the baseline year of 1998-99.

South Carolina Juvenile Justice System

FY 2002/2003



System Process and Flow

FY 2002/03

Family Court Intake- DJJ intake workers process delinquency cases by determining the facts of the case through law enforcement and/or school documentation of the infraction, interviews with juvenile and family, contacts with other agencies that may have knowledge to contribute, and consultation with victims. In cases where a juvenile has been taken into custody by law enforcement, DJJ is called upon to perform a detention screening. DJJ staff make an advisory recommendation on release or detention pending court resolution of the case. The initial intake process concludes when a case is turned over to the Solicitor's Office with an advisory recommendation by DJJ to prosecute or divert a case.

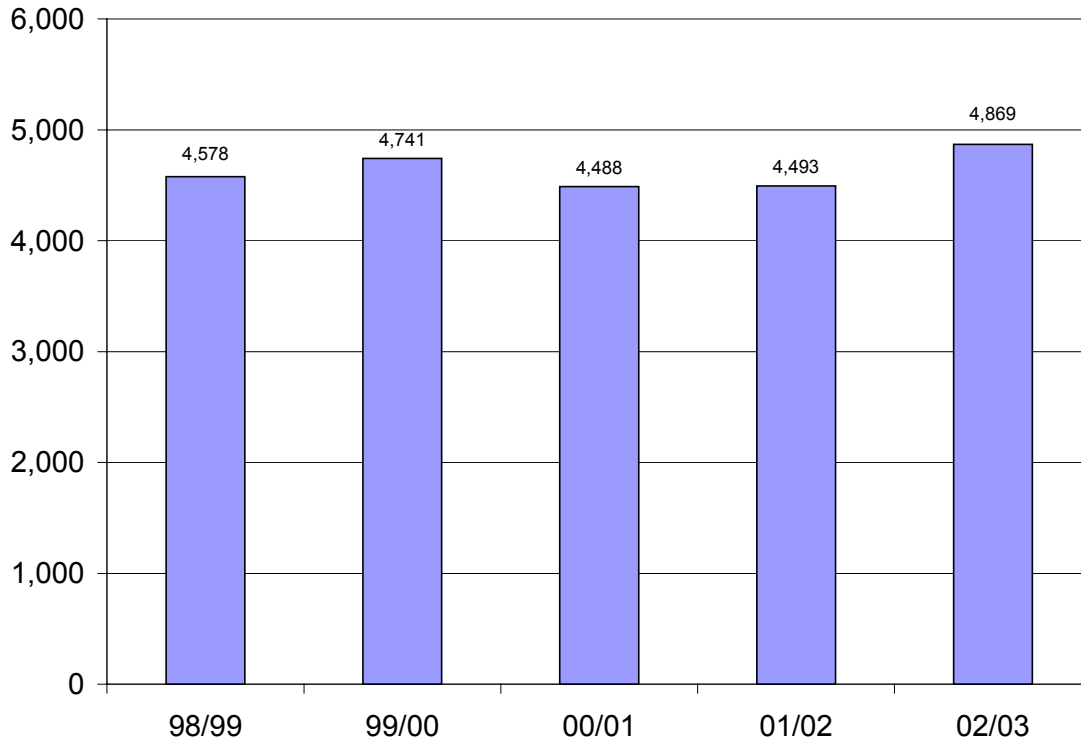
Solicitor Decision- The solicitor decision is one of whether to prosecute or not to prosecute a case. In part this decision rests on the merits of the case, and the result may be dismissal or a determination not to prosecute (*nolle prosequi*). The solicitor also may exercise non-judicial options, including, restitution and diversion programs. Typically, diversion programs are used for first time and minor offenders. Arbitration programs, law-related education, and behavioral contracts provide a means of diverting appropriate cases while still holding the offender accountable for his/her actions. Over half of the juvenile cases do not advance beyond this point.

Judicial Disposition- Judicial outcome rests in part upon the merits of the case, resulting in some dismissals and acquittals. State law also allows certain serious cases to be considered for waiver to the adult court.

The judge may order a psychological/social evaluation of a juvenile following an adjudication of delinquency (analogous to a conviction for a crime in the adult system). These evaluations are completed in secure residential facilities operated by DJJ or in the community prior to final disposition of the case. The most frequent final disposition is probation. Truancy-related cases may result in a school attendance order. The most serious sanction available to the Family Court is commitment to DJJ, either for a determinate (up to 90 days) or an indeterminate period (not to exceed the juvenile's 21st birthday). The Juvenile Parole Board governs the length of stay for indeterminately sentenced juveniles.

Juvenile Detention Pre- and Post- Adjudication

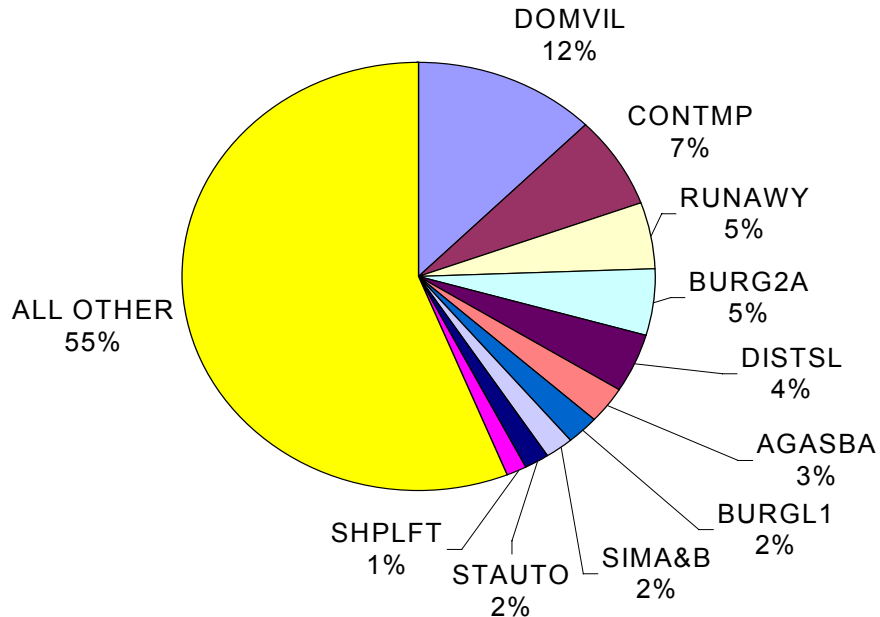
FY 1998/99 through FY 2002/03



Admissions to detention have increased slightly over the last five years (6%). Black males comprised 47 percent of admissions in FY 2002/03, white males 26 percent, black females 14 percent, and white females 12 percent. The remaining two percent consisted of other males and females.

Ten Most Frequent Offenses Associated with Juvenile Detention

FY 2002 / 03



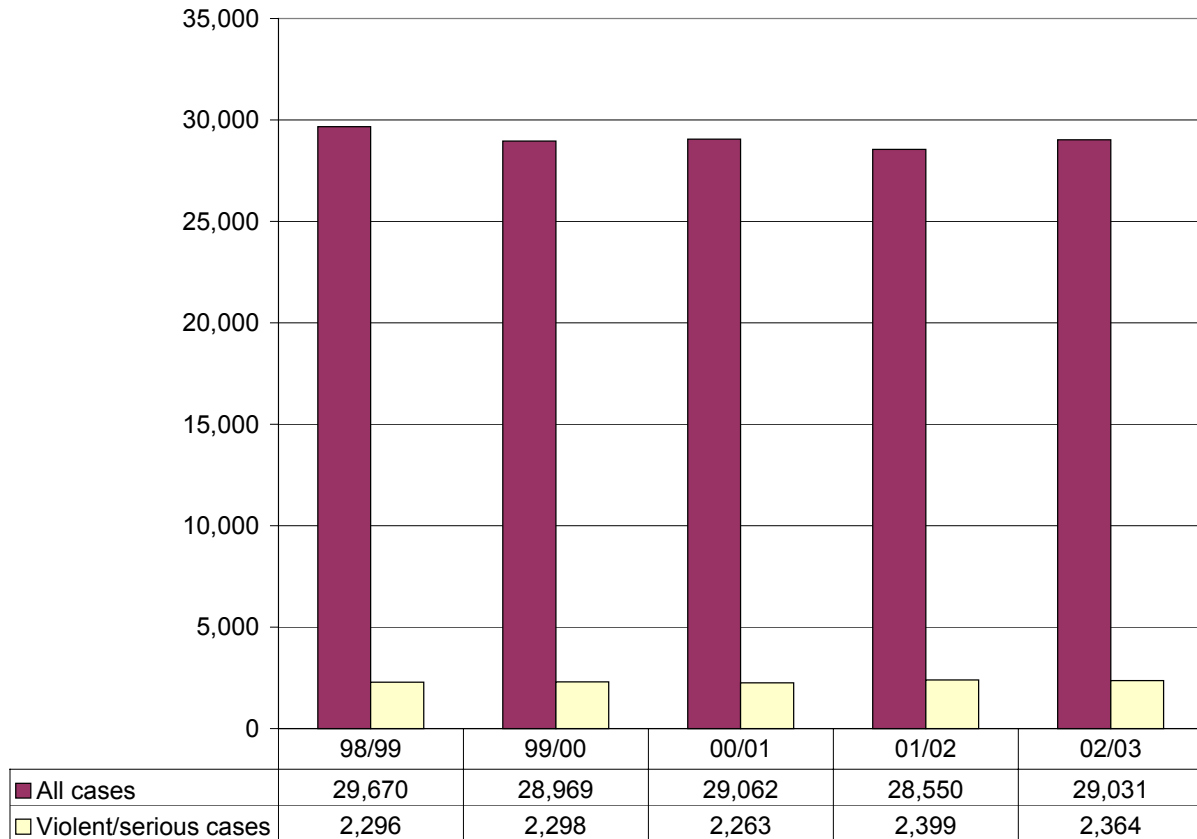
| Rank | Offense | # of Cases (n=2,134) | % All Detention Cases (n=4,869) |
|------|---------------------------------|-------------------------|------------------------------------|
| 1 | Domestic Violence (Misdemeanor) | 606 | 12% |
| 2 | Contempt of Court | 336 | 7% |
| 3 | Runaway | 251 | 5% |
| 4 | Burglary 2nd Degree | 242 | 5% |
| 5 | Disturbing Schools | 217 | 4% |
| 6 | Aggravated Assault and Battery | 127 | 3% |
| 7 | Burglary 1st Degree | 119 | 2% |
| 8 | Simple Assault and Battery | 86 | 2% |
| 9 | Possession of Stolen Vehicle | 79 | 2% |
| 10 | Shoplifting | 71 | 1% |

In FY 02/03, the ten offenses listed above accounted for nearly half of all juvenile detentions in the state. The top ten includes one *status offense (Runaway).

*Status offenses are offenses that can be charged only against juveniles including truancy, runaway, and incorrigibility.

Juvenile Cases to the Solicitor

FY 1998/99 through FY 2002/03

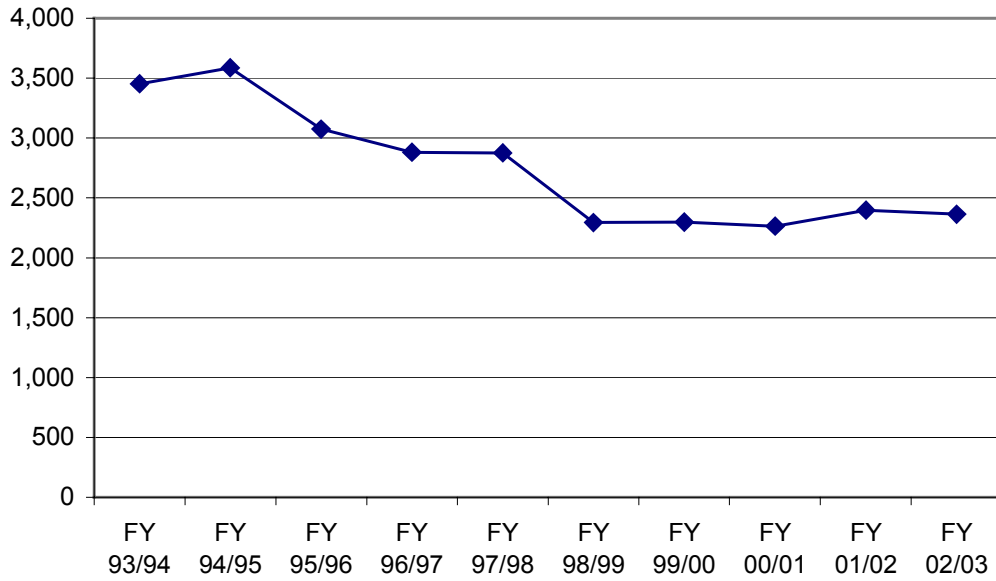


Over the last 5 years, all juvenile *cases to the solicitor have decreased 2 percent, while the **violent/serious cases increased 3 percent. Violent/serious cases compose just 8 percent of Family Court juvenile cases.

*A case may consist of one or more offenses charged to a juvenile and processed together. The most serious offense is used to categorize a case when multiple offenses are involved.

**Violent/serious cases include murder, criminal sexual conduct 1st & 2nd degree, assault & battery with intent to kill, kidnapping, voluntary manslaughter, armed robbery, arson 1st & 2nd degree, burglary 1st & 2nd degree, drug trafficking, and all offenses categorized in the South Carolina Code of Laws as acts against persons.

Violent and Serious Juvenile Cases - Ten-Year Comparison



The number of violent and serious juvenile cases has decreased 32% since the baseline year of 1993/94, and 34% since the peak year of 1994/95

Counties with Increases in Juvenile Cases

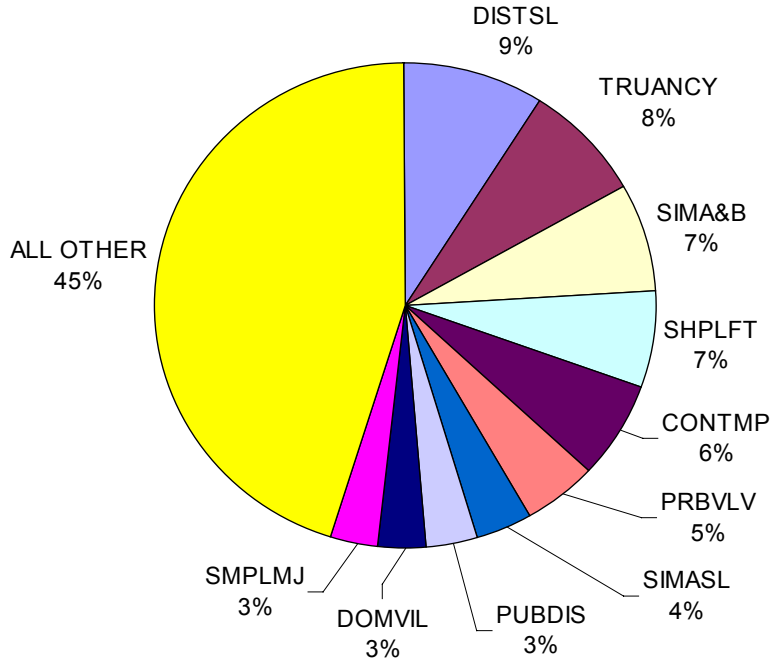
Between FY 2001/02 and FY 2002/03

| Rank | County | FY 2002 | FY 2003 | Net Increase | % Increase |
|------|------------------|---------------|---------------|--------------|------------|
| 1 | Barnwell | 131 | 211 | 80 | 61% |
| 2 | Dorchester | 610 | 895 | 285 | 47% |
| 3 | McCormick | 53 | 71 | 18 | 34% |
| 4 | Fairfield | 62 | 80 | 18 | 29% |
| 5 | Florence | 951 | 1,227 | 276 | 29% |
| 6 | Laurens | 352 | 437 | 85 | 24% |
| 7 | Calhoun | 71 | 88 | 17 | 24% |
| 8 | Williamsburg | 150 | 183 | 33 | 22% |
| 9 | Greenwood | 515 | 624 | 109 | 21% |
| 10 | Kershaw | 289 | 331 | 42 | 15% |
| 11 | Marion | 503 | 567 | 64 | 13% |
| 12 | Cherokee | 480 | 536 | 56 | 12% |
| 13 | Darlington | 690 | 753 | 63 | 9% |
| 14 | Berkeley | 1,434 | 1,543 | 109 | 8% |
| 15 | Beaufort | 547 | 583 | 36 | 7% |
| 16 | Jasper | 145 | 154 | 9 | 6% |
| 17 | Clarendon | 181 | 191 | 10 | 6% |
| 18 | Hampton | 92 | 97 | 5 | 5% |
| 19 | Bamberg | 102 | 107 | 5 | 5% |
| 20 | Richland | 1,318 | 1,379 | 61 | 5% |
| 21 | Greenville | 2,367 | 2,452 | 85 | 4% |
| 22 | Chesterfield | 267 | 276 | 9 | 3% |
| 23 | Dillon | 261 | 265 | 4 | 2% |
| 24 | York | 1,420 | 1,436 | 16 | 1% |
| | Statewide | 28,550 | 29,031 | | 2% |

Increases in juvenile cases to the solicitor were seen in 24 of the state's 46 counties. The greatest percentage increase (61%) occurred in Barnwell county compared to just 2 percent for the state as a whole. The greatest net increases were seen in Dorchester (285), Florence (276), Greenwood (109) and Berkeley (109).

Ten Most Frequent Offenses Associated with Juvenile Cases to the Solicitor

FY 2002/03



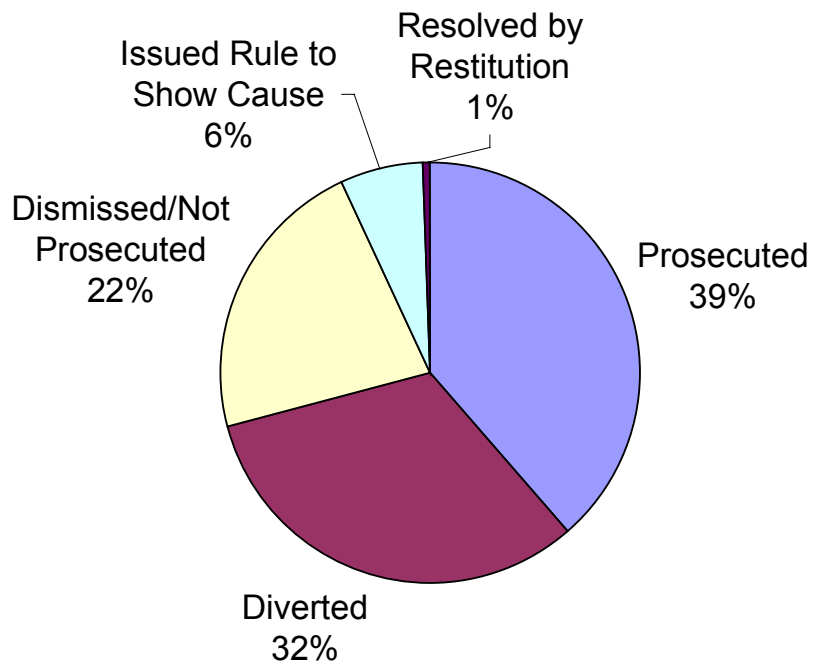
| Rank | Offense | # of Cases (n=15,895) | % of All Cases (N=29,031) |
|------|---------------------------------|--------------------------|------------------------------|
| 1 | Disturbing Schools | 2,658 | 9% |
| 2 | Truancy | 2,269 | 8% |
| 3 | Simple Assault & Battery | 2,068 | 7% |
| 4 | Shoplifting | 1,902 | 7% |
| 5 | Contempt of Court | 1,841 | 6% |
| 6 | Probation Violation V* | 1,342 | 5% |
| 7 | Simple Assault | 1,052 | 4% |
| 8 | Public Disorderly Conduct | 987 | 3% |
| 9 | Domestic Violence (misdemeanor) | 904 | 3% |
| 10 | Simple Possession of Marijuana | 872 | 3% |

In FY 02/03, the ten offenses listed above accounted for over half of the 29,031 juvenile cases processed through intake by DJJ. These included one **status offense (truancy), and other offenses generally considered to be minor crimes.

*Violation of probation, where probation was given for a category V offense. Category V offenses are minor, misdemeanor-level crimes.

**Status offenses are offenses that can be charged only against juveniles including truancy, runaway, and incorrigibility.

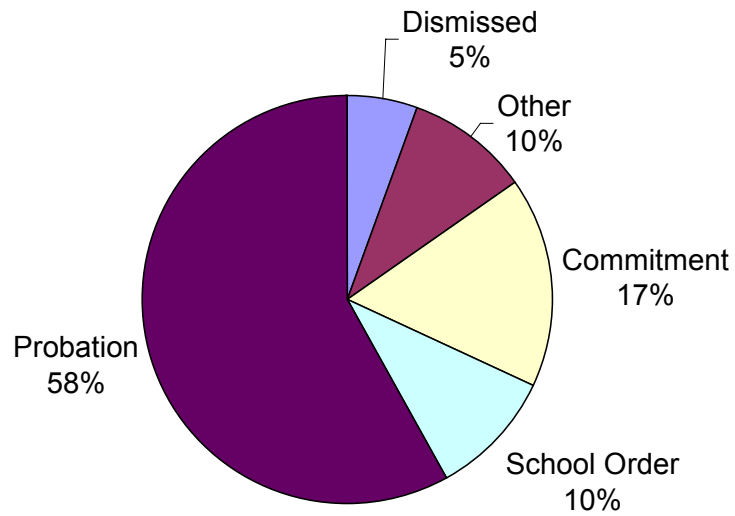
Solicitor Decisions in Juvenile Cases FY 2002/03



Solicitor decisions were made in 27,344 juvenile cases during FY 2002/03. Forty-five percent (45%) of these cases moved forward to the family courts based on decisions to prosecute or issue rule to show cause orders. The remaining 55 percent were diverted, resolved by restitution, dismissed, or not prosecuted. The percentage of cases resolved without formal prosecution has exceeded 50 percent in each of the past ten years.

Family Court Judicial Dispositions in Juvenile Cases

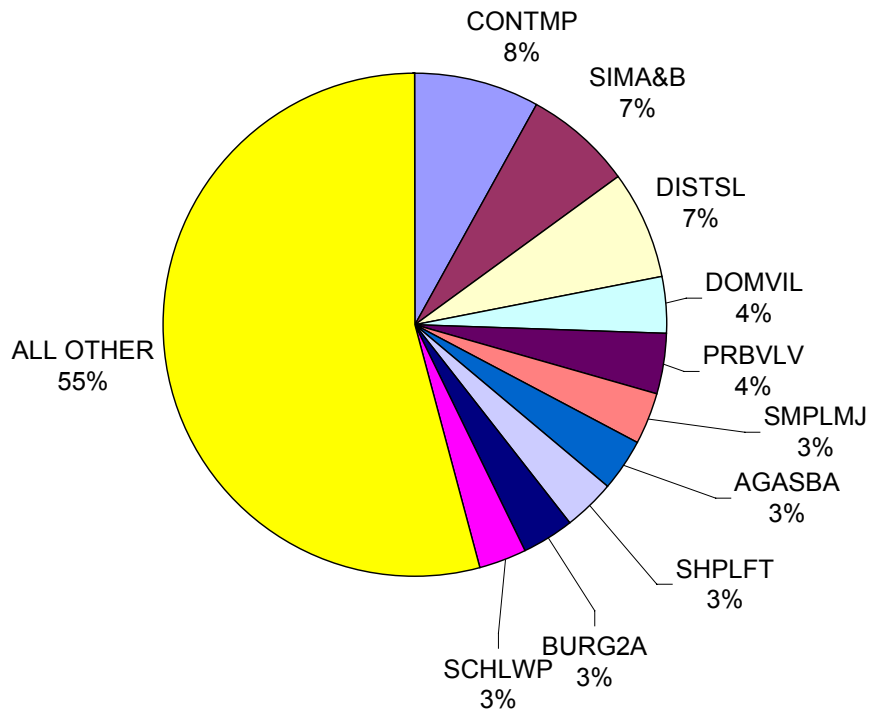
FY 2002/03



The Family Court disposed of 11,075 juvenile cases during FY 2002/03. Probation was the primary disposition in 58 percent of the cases.

Ten Most Frequent Offenses Associated with Dispositions of Probation

FY 2002/03



| Rank | Offense | # of Cases (n=2,945) | % of All Probation (n=6,431) |
|------|---|-------------------------|---------------------------------|
| 1 | Contempt of Court | 514 | 8% |
| 2 | Simple Assault & Battery | 455 | 7% |
| 3 | Disturbing School | 442 | 7% |
| 4 | Domestic Violence (Misdemeanor) | 241 | 4% |
| 5 | Probation Violation (Category V) | 235 | 4% |
| 6 | Simple Possession of Marijuana | 221 | 3% |
| 7 | Aggravated Assault and Battery | 218 | 3% |
| 8 | Shoplifting | 214 | 3% |
| 9 | Burglary 2 nd Degree (Non-violent) | 206 | 3% |
| 10 | Carrying Weapons on School Grounds | 199 | 3% |

The ten offenses listed above accounted for 45 percent of all probation dispositions during FY 2002/03.

Community Case Services

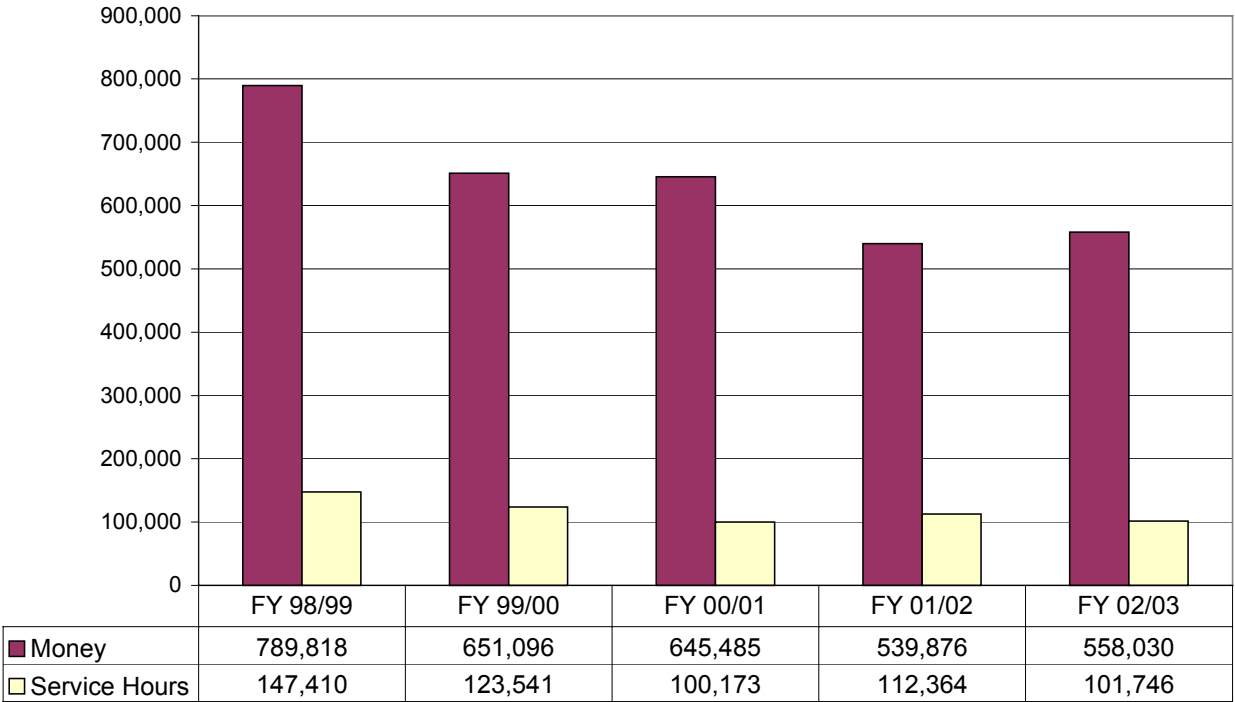
FY 2002/2003

| | <u>Number</u> |
|--|----------------------|
| <i>Processing of Juvenile Cases*</i> | |
| Juvenile cases forwarded to the solicitor | 29,031 |
| Diverted or dismissed at intake level | 14,848 |
| Dismissed or acquitted at judicial level | 607 |
| School attendance ordered by Family Court | 1,108 |
| Probation ordered by Family Court | 6,431 |
| | |
| <i>Community Support Services</i> | |
| Probation/parole transferred to SC | 208 |
| Probation /parole transferred to other states | 206 |
| Runaways returned to SC | 43 |
| Runaways returned to other states | 77 |
| <i>Interstate Compact Total</i> | 534 |
| | |
| Admitted to DJJ operated group homes/shelters | 293 |
| Admitted to marine/wilderness programs as an alternative to commitment | 141 |
| Transferred to wilderness programs (committed juveniles) | 674 |
| Placed with multi-agency and other contractual providers | 316 |
| <i>Community-Based Residential Services Total</i> | 1,424 |
| | |
| <i>Community Case Management</i> | |
| Number on probation or parole as of June 18, 2003 | 5,693 |
| Juveniles paroled to the community in fiscal year 02-03 | 582 |

*Excludes those cases pending at the solicitor and judicial levels, certain administrative actions, General Sessions Court cases (juveniles tried as adults), and parole revocations.

Juvenile Restitution Orders

FY 1998/99 through FY 2002/03

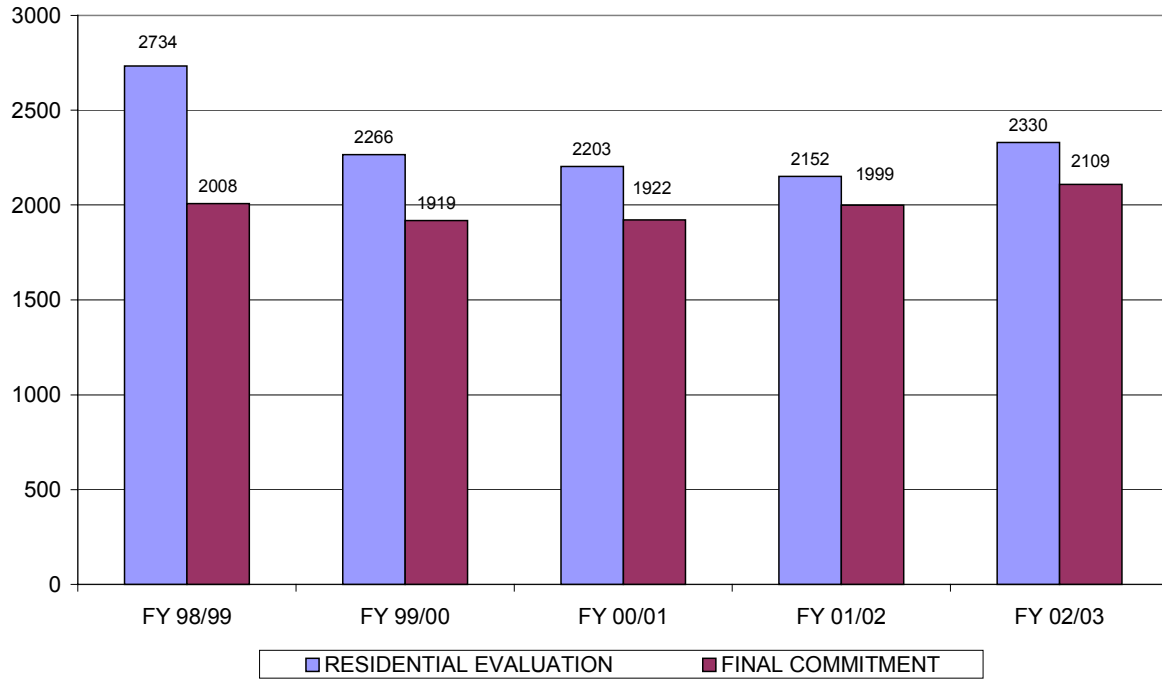


Restitution and other forms of offender accountability continue to receive strong emphasis within the Department. Both the Family Court and the Juvenile Parole Board may impose restitution in the form of community service or monetary reparation. DJJ’s restitution program offers services responsive to victim, community, and offender needs.

During FY 2002/03, juveniles were ordered to pay \$558,030 in restitution and to perform 101,746 hours of community service.

Commitments

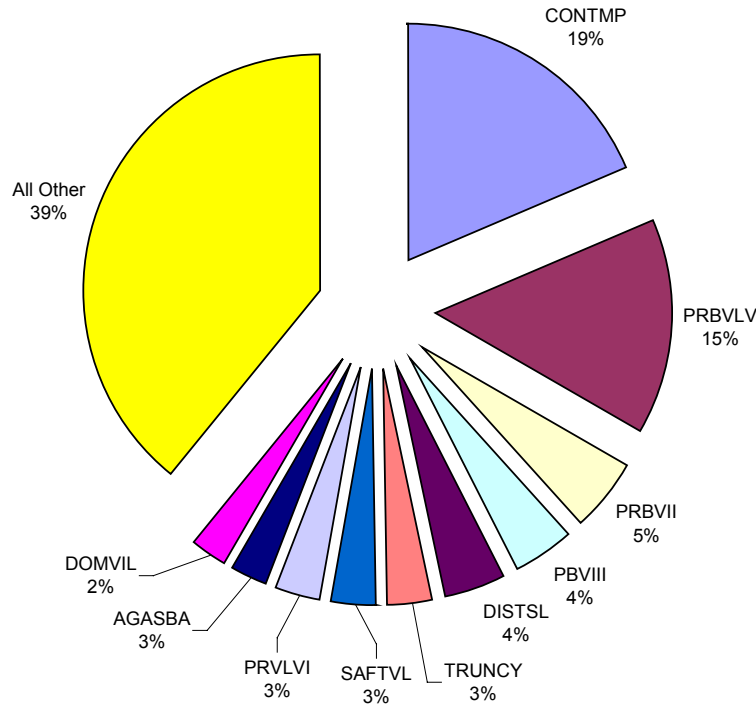
FY 1998/99 through FY 2002/03



Temporary commitments to residential evaluation centers decreased (15 percent), while final commitments to DJJ custody increased slightly (5 percent) over the 5-year period.

Ten Most Frequent Offenses Associated with Commitment

FY 2002/03

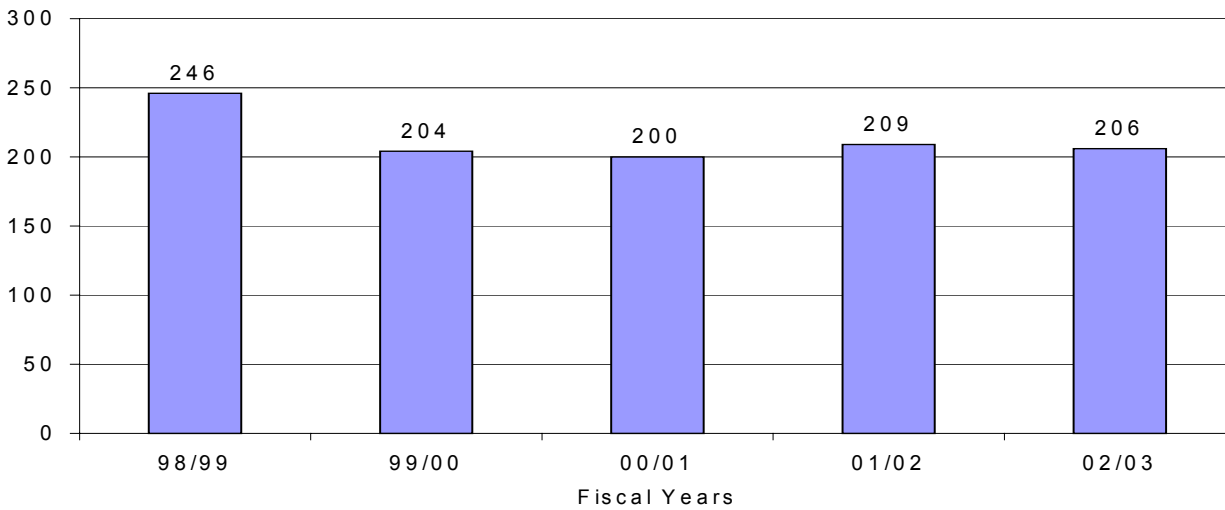


| Rank | Offense | #of Cases (n= 1,284) | % of all Commitments (n=2,109) |
|------|----------------------------------|-------------------------|-----------------------------------|
| 1 | Contempt of Court | 394 | 19% |
| 2 | Probation Violation Category V | 311 | 15% |
| 3 | Probation Violation Category II | 103 | 5% |
| 4 | Probation Violation Category III | 90 | 4% |
| 5 | Disturbing Schools | 85 | 4% |
| 6 | Truancy | 67 | 3% |
| 7 | Simple Aftercare Violation | 65 | 3% |
| 8 | Probation Violation Category VI | 60 | 3% |
| 9 | Aggravated Assault and Battery | 57 | 3% |
| 10 | Domestic Violence (Misdemeanor) | 52 | 2% |

Contempt of court ranked first, and comprised 19 percent of the offenses associated with commitment to DJJ in FY 2002/03. Technical violations of probation or parole collectively accounted for a significant proportion of commitments (30%).

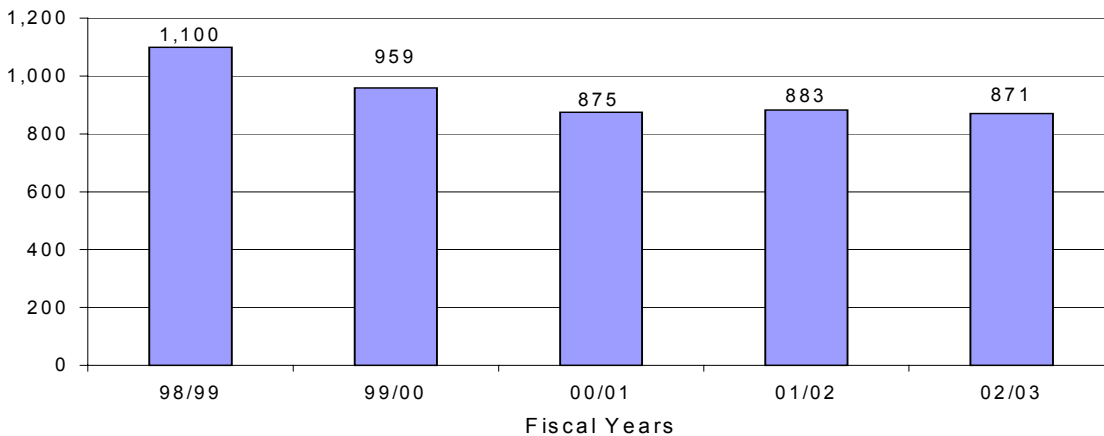
Average Daily Populations FY 1998/99 through FY 2002/03

Pre-Dispositional Evaluation



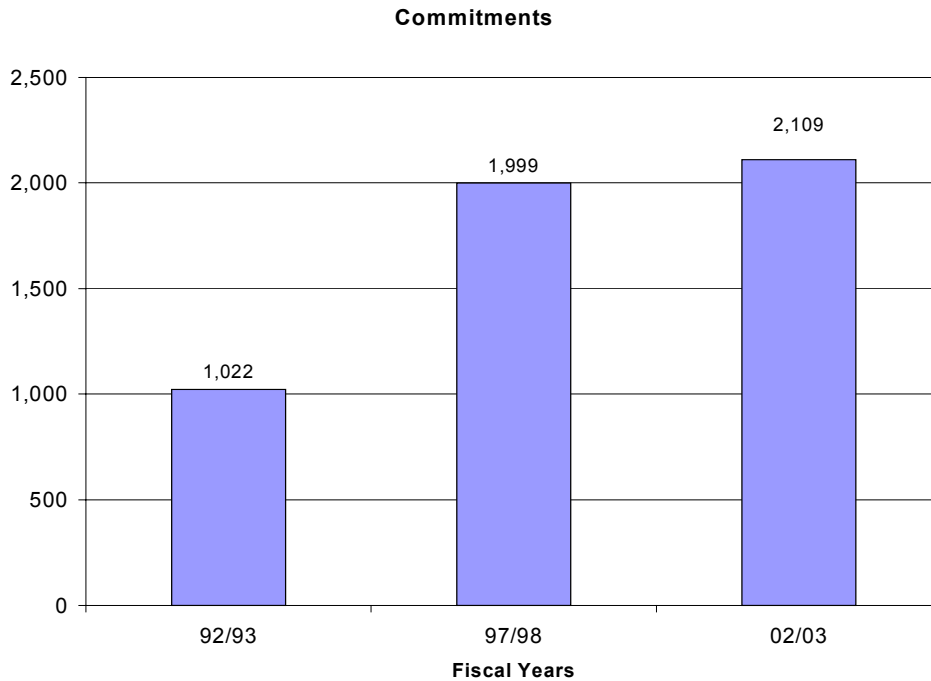
The primary function of regional evaluation centers is to provide comprehensive diagnostic services to the Family Court for adjudicated juvenile offenders prior to final disposition of cases. Three regional evaluation facilities, Midlands, Upstate, and Coastal have opened since 1997. The average daily population for evaluation purposes has remained quite stable over the five-year period. Evaluation Centers also house the admissions process in which juveniles committed to DJJ at disposition are classified and placed into facilities or wilderness camps. These numbers are included in the “Final Commitment” population below.

Final Commitment

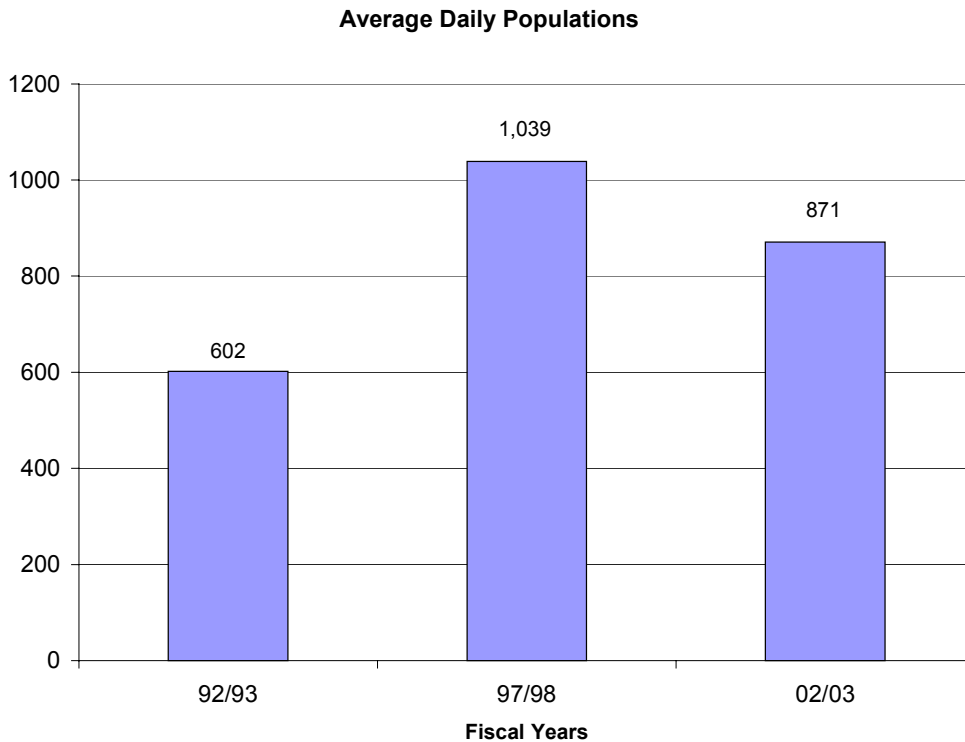


A variety of programs, ranging from wilderness camps to institutional facilities are used to accommodate youth committed to DJJ custody by the courts. The average daily population of committed juveniles has decreased by 30 percent since the baseline year of 1998/99.

Commitments and Average Daily Populations A 10-Year Retrospective



Final Commitments to DJJ custody have increased sharply, doubling in the last decade. The downturn in average daily population since 1997-98 is indicative of a shorter average length of stay for committed juveniles in DJJ custody. The decrease in average length of stay largely has resulted from an influx of juveniles committed for short-term determinate sentences that can range from one to 90 days.



Population Profiles over a 10-Year Span

FY 2002/03

| | FY 1993 | FY 1998 | FY 2003 | % Change FY '93 – 2003 |
|---------------------------------|---------------|---------------|---------------|---------------------------|
| Cases to the Solicitor | 22,505 | 28,057 | 29,032 | 29% |
| Black | 57% | 55% | 55% | |
| White | 42% | 44% | 43% | |
| Other | 1% | 1% | 2% | |
| Male | 73% | 69% | 68% | |
| Female | 27% | 31% | 32% | |
| Evaluation Commitments | 2,103 | 2,582 | 2,330 | 11% |
| Black | 65% | 57% | 59% | |
| White | 34% | 42% | 39% | |
| Other | 1% | 1% | 1% | |
| Male | 80% | 76% | 76% | |
| Female | 20% | 24% | 24% | |
| Average Daily Population | 209 | 219 | 206 | -1% |
| Final Commitments | 1,022 | 1,999 | 2,109 | 106% |
| Black | 73% | 61% | 60% | |
| White | 26% | 38% | 38% | |
| Other | 1% | 1% | 1% | |
| Male | 87% | 74% | 76% | |
| Female | 13% | 26% | 24% | |
| Average Daily Population | 667 | 1,039 | 871 | 31% |

This chart presents the juvenile offender population at three points in time and at three levels within the juvenile justice system. At the front end of the system, the 29 percent increase in cases over the 10-year period is significant, although much of the growth occurred in the first five years of the decade. The doubling of final commitments to DJJ custody paired with much more modest growth in average daily population indicates more youth coming into custody situations, but staying a shorter amount of time. It is noteworthy that the proportion of females has increased at all levels over the ten-year period.

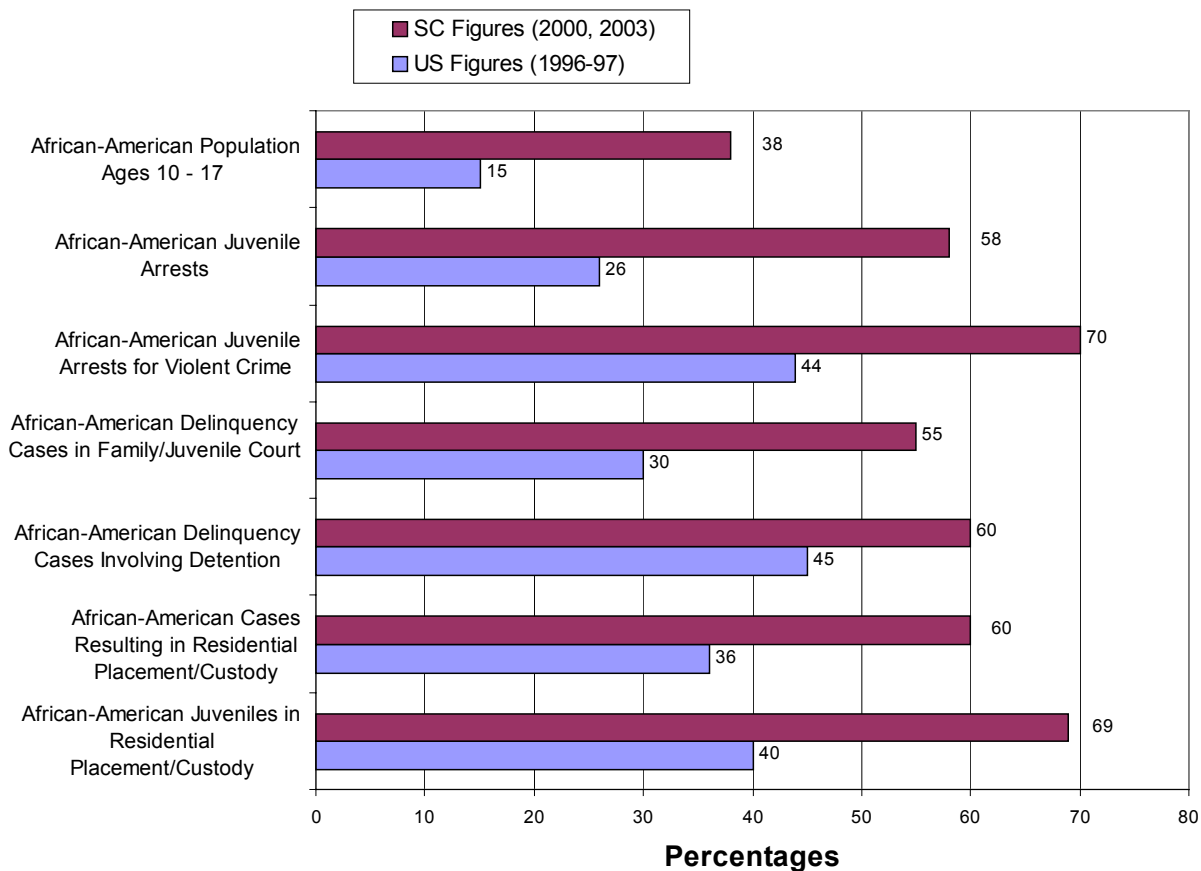
Juvenile Offender Profiles

FY 2002/03

| Population | Intake (N = 29,031) | Probation (N = 6,431) | Final Commitments (N = 2,109) |
|----------------------------------|------------------------|--------------------------|-------------------------------------|
| Race | | | |
| Black | 55% | 57% | 60% |
| White | 43% | 42% | 38% |
| Other | 2% | 1% | 1% |
| Sex | | | |
| Male | 68% | 72% | 76% |
| Female | 32% | 28% | 24% |
| Average Age | 14.4 | 14.8 | 15.2 |
| School Status | | | |
| Regular Classroom | 68% | 65% | 59% |
| Not Attending | 10% | 11% | 14% |
| Special Education | 13% | 14% | 18% |
| Other | 9% | 10% | 9% |
| Household Income | | | |
| Under \$10,000 | 30% | 29% | 34% |
| \$10,000 - \$19,999 | 35% | 35% | 36% |
| \$20,000 or more | 35% | 36% | 30% |
| Living Arrangement | | | |
| Both Natural Parents | 18% | 17% | 13% |
| Single Parent | 55% | 54% | 57% |
| All Other | 27% | 29% | 30% |
| Legal Characteristics | | | |
| Violent/Serious | 8% | 11% | 11% |
| Prior Court History | 53% | 67% | 89% |

African-American Overrepresentation in the Juvenile Justice System

South Carolina & the United States



South Carolina's general population in age categories corresponding to eligibility for the juvenile justice system is 38 percent African-American. Therefore, any juvenile justice population in which the African-Americans comprise more than 38 percent is disproportionate to their representation in the general population. Overrepresentation of African-Americans is evidenced at several critical junctures in South Carolina's juvenile justice system including all juvenile arrests, arrests for violent crime, delinquency cases before the family courts, detention, and juveniles in residential placement. The degree of African-American overrepresentation is consistent with national figures.

APPENDIX TABLE I
JUVENILES DETAINED (PRE and POST ADJUDICATORY) by COUNTY/JURISDICTION
FY 2002/2003

| COUNTY/JURISDICTION | JUVENILES DETAINED | PERCENT of TOTAL |
|---------------------|--------------------|------------------|
| Abbeville | 12 | 0% |
| Aiken | 68 | 1% |
| Allendale | 49 | 1% |
| Anderson | 294 | 6% |
| Bamberg | 16 | 0% |
| Barnwell | 17 | 0% |
| Beaufort | 74 | 2% |
| Berkeley | 174 | 4% |
| Calhoun | 4 | 0% |
| Charleston | 873 | 18% |
| Cherokee | 30 | 1% |
| Chester | 53 | 1% |
| Chesterfield | 9 | 0% |
| Clarendon | 29 | 1% |
| Colleton | 31 | 1% |
| Darlington | 83 | 2% |
| Dillon | 25 | 1% |
| Dorchester | 99 | 2% |
| Edgefield | 7 | 0% |
| Fairfield | 18 | 0% |
| Florence | 84 | 2% |
| Georgetown | 29 | 1% |
| Greenville | 822 | 17% |
| Greenwood | 65 | 1% |
| Hampton | 31 | 1% |
| Horry | 236 | 5% |
| Jasper | 44 | 1% |
| Kershaw | 63 | 1% |
| Lancaster | 77 | 2% |
| Laurens | 46 | 1% |
| Lee | 4 | 0% |
| Lexington | 130 | 3% |
| McCormick | 5 | 0% |
| Marion | 27 | 1% |
| Marlboro | 41 | 1% |
| Newberry | 30 | 1% |
| Oconee | 19 | 0% |
| Orangeburg | 92 | 2% |
| Pickens | 87 | 2% |
| Richland | 296 | 6% |
| Saluda | 14 | 0% |
| Spartanburg | 389 | 8% |
| Sumter | 70 | 1% |
| Union | 21 | 0% |
| Williamsburg | 10 | 0% |
| York | 172 | 4% |
| Other Jurisdiction | 0 | 0% |
| TOTAL | 4,869 | 100% |

APPENDIX TABLE II
DELINQUENCY PROCESSING RATE by COUNTY
 FY 2002/2003

| COUNTY | All Juveniles | | <u>Delinquency Processing</u> <u>of Age-Eligible Juveniles</u> | |
|--------------|----------------|----------------|---|----------------|
| | Ages 10 - 16* | Juvenile Cases | Percent | Rate per 1,000 |
| Abbeville | 2,681 | 115 | 4% | 43 |
| Aiken | 14,974 | 947 | 6% | 63 |
| Allendale | 1,184 | 144 | 12% | 122 |
| Anderson | 15,986 | 880 | 6% | 55 |
| Bamberg | 1,736 | 107 | 6% | 62 |
| Barnwell | 2,780 | 211 | 8% | 76 |
| Beaufort | 10,516 | 583 | 6% | 55 |
| Berkeley | 16,361 | 1,543 | 9% | 94 |
| Calhoun | 1,554 | 88 | 6% | 57 |
| Charleston | 29,306 | 2,875 | 10% | 98 |
| Cherokee | 5,236 | 536 | 10% | 102 |
| Chester | 3,725 | 133 | 4% | 36 |
| Chesterfield | 4,584 | 276 | 6% | 60 |
| Clarendon | 3,590 | 191 | 5% | 53 |
| Colleton | 4,310 | 376 | 9% | 87 |
| Darlington | 6,809 | 753 | 11% | 111 |
| Dillon | 3,656 | 265 | 7% | 72 |
| Dorchester | 11,860 | 895 | 8% | 75 |
| Edgefield | 2,455 | 111 | 5% | 45 |
| Fairfield | 2,459 | 80 | 3% | 33 |
| Florence | 13,415 | 1,227 | 9% | 91 |
| Georgetown | 5,866 | 509 | 9% | 87 |
| Greenville | 36,160 | 2,452 | 7% | 68 |
| Greenwood | 6,529 | 624 | 10% | 96 |
| Hampton | 2,475 | 97 | 4% | 39 |
| Horry | 16,404 | 2,030 | 12% | 124 |
| Jasper | 2,116 | 154 | 7% | 73 |
| Kershaw | 5,700 | 331 | 6% | 58 |
| Lancaster | 6,167 | 606 | 10% | 98 |
| Laurens | 7,158 | 437 | 6% | 61 |
| Lee | 2,091 | 59 | 3% | 28 |
| Lexington | 22,406 | 1,588 | 7% | 71 |
| McCormick | 873 | 71 | 8% | 81 |
| Marion | 3,969 | 567 | 14% | 143 |
| Marlboro | 3,062 | 236 | 8% | 77 |
| Newberry | 3,465 | 172 | 5% | 50 |
| Oconee | 6,062 | 199 | 3% | 33 |
| Orangeburg | 9,748 | 984 | 10% | 101 |
| Pickens | 9,659 | 616 | 6% | 64 |
| Richland | 30,893 | 1,379 | 4% | 45 |
| Saluda | 1,881 | 56 | 3% | 30 |
| Spartanburg | 24,610 | 1,161 | 5% | 47 |
| Sumter | 11,714 | 452 | 4% | 39 |
| Union | 2,827 | 296 | 10% | 105 |
| Williamsburg | 4,525 | 183 | 4% | 40 |
| York | 17,427 | 1,436 | 8% | 82 |
| TOTAL | 402,964 | 29,031 | 7% | 72 |

*Population Census Data provided by SC Data Center April 1, 2000.

APPENDIX TABLE III
JUVENILE CASES to the SOLICITOR by COUNTY
FY 2002/2003

| COUNTY | ALL CASES | VIOLENT/SERIOUS | | STATUS | |
|---------------|------------------|------------------------|-----------|---------------|------------|
| | NUMBER | NUMBER | PERCENT | NUMBER | PERCENT |
| Abbeville | 115 | 13 | 11% | 17 | 15% |
| Aiken | 947 | 45 | 5% | 119 | 13% |
| Allendale | 144 | 18 | 13% | 33 | 23% |
| Anderson | 880 | 70 | 8% | 3 | 0% |
| Bamberg | 107 | 27 | 25% | 6 | 6% |
| Barnwell | 211 | 11 | 5% | 27 | 13% |
| Beaufort | 583 | 114 | 20% | 24 | 4% |
| Berkeley | 1,543 | 57 | 4% | 199 | 13% |
| Calhoun | 88 | 5 | 6% | 10 | 11% |
| Charleston | 2,875 | 216 | 8% | 181 | 6% |
| Cherokee | 536 | 34 | 6% | 207 | 39% |
| Chester | 133 | 13 | 10% | 27 | 20% |
| Chesterfield | 276 | 39 | 14% | 37 | 13% |
| Clarendon | 191 | 17 | 9% | 13 | 7% |
| Colleton | 376 | 44 | 12% | 54 | 14% |
| Darlington | 753 | 75 | 10% | 110 | 15% |
| Dillon | 265 | 34 | 13% | 53 | 20% |
| Dorchester | 895 | 70 | 8% | 217 | 24% |
| Edgefield | 111 | 9 | 8% | 1 | 1% |
| Fairfield | 80 | 7 | 9% | 32 | 40% |
| Florence | 1,227 | 70 | 6% | 230 | 19% |
| Georgetown | 509 | 61 | 12% | 14 | 3% |
| Greenville | 2,452 | 198 | 8% | 340 | 14% |
| Greenwood | 624 | 51 | 8% | 96 | 15% |
| Hampton | 97 | 11 | 11% | 30 | 31% |
| Horry | 2,030 | 99 | 5% | 323 | 16% |
| Jasper | 154 | 16 | 10% | 23 | 15% |
| Kershaw | 331 | 38 | 11% | 75 | 23% |
| Lancaster | 606 | 49 | 8% | 30 | 5% |
| Laurens | 437 | 50 | 11% | 68 | 16% |
| Lee | 59 | 5 | 8% | 11 | 19% |
| Lexington | 1,588 | 72 | 5% | 145 | 9% |
| McCormick | 71 | 12 | 17% | 10 | 14% |
| Marion | 567 | 64 | 11% | 69 | 12% |
| Marlboro | 236 | 27 | 11% | 40 | 17% |
| Newberry | 172 | 25 | 15% | 36 | 21% |
| Oconee | 199 | 17 | 9% | 4 | 2% |
| Orangeburg | 984 | 53 | 5% | 115 | 12% |
| Pickens | 616 | 39 | 6% | 142 | 23% |
| Richland | 1,379 | 164 | 12% | 82 | 6% |
| Saluda | 56 | 9 | 16% | 2 | 4% |
| Spartanburg | 1,161 | 109 | 9% | 81 | 7% |
| Sumter | 452 | 67 | 15% | 62 | 14% |
| Union | 296 | 27 | 9% | 47 | 16% |
| Williamsburg | 183 | 20 | 11% | 46 | 25% |
| York | 1,436 | 93 | 6% | 310 | 22% |
| TOTAL | 29,031 | 2,364 | 8% | 3,801 | 13% |

APPENDIX TABLE IV
SOLICITOR ACTION on JUVENILE CASES by COUNTY
 FY 2002/2003

| COUNTY | PENDING | DISMISS | DIVERT | RESTITUTION | PROSECUTE | ISSUE RULE | TOTAL* |
|--------------|--------------|--------------|--------------|-------------|---------------|--------------|---------------|
| Abbeville | 6 | 16 | 35 | 0 | 66 | 3 | 120 |
| Aiken | 16 | 117 | 285 | 0 | 362 | 177 | 941 |
| Allendale | 0 | 3 | 51 | 0 | 90 | 0 | 144 |
| Anderson | 175 | 157 | 186 | 0 | 334 | 104 | 781 |
| Bamberg | 1 | 12 | 16 | 0 | 59 | 17 | 104 |
| Barnwell | 0 | 10 | 52 | 0 | 179 | 1 | 242 |
| Beaufort | 122 | 93 | 74 | 3 | 296 | 51 | 517 |
| Berkeley | 904 | 171 | 427 | 14 | 451 | 80 | 1,143 |
| Calhoun | 0 | 17 | 39 | 1 | 31 | 1 | 89 |
| Charleston | 531 | 635 | 1,229 | 35 | 486 | 199 | 2,584 |
| Cherokee | 10 | 121 | 141 | 0 | 245 | 38 | 545 |
| Chester | 0 | 44 | 13 | 0 | 79 | 6 | 142 |
| Chesterfield | 29 | 124 | 45 | 0 | 99 | 5 | 273 |
| Clarendon | 58 | 104 | 51 | 1 | 31 | 1 | 188 |
| Colleton | 22 | 40 | 176 | 0 | 119 | 44 | 379 |
| Darlington | 54 | 255 | 200 | 0 | 263 | 38 | 756 |
| Dillon | 11 | 48 | 88 | 0 | 130 | 7 | 273 |
| Dorchester | 124 | 93 | 328 | 0 | 497 | 0 | 918 |
| Edgefield | 14 | 32 | 44 | 0 | 21 | 6 | 103 |
| Fairfield | 3 | 22 | 1 | 0 | 58 | 0 | 81 |
| Florence | 176 | 322 | 656 | 4 | 154 | 35 | 1,171 |
| Georgetown | 275 | 93 | 123 | 58 | 136 | 0 | 410 |
| Greenville | 588 | 218 | 972 | 5 | 924 | 1 | 2,120 |
| Greenwood | 225 | 83 | 168 | 7 | 243 | 13 | 514 |
| Hampton | 9 | 1 | 8 | 0 | 70 | 19 | 98 |
| Horry | 647 | 1,043 | 110 | 0 | 876 | 57 | 2,086 |
| Jasper | 22 | 24 | 36 | 0 | 80 | 0 | 140 |
| Kershaw | 185 | 7 | 8 | 0 | 158 | 0 | 173 |
| Lancaster | 112 | 317 | 122 | 36 | 137 | 30 | 642 |
| Laurens | 15 | 41 | 159 | 0 | 213 | 36 | 449 |
| Lee | 0 | 2 | 17 | 0 | 40 | 0 | 59 |
| Lexington | 153 | 366 | 709 | 3 | 256 | 174 | 1,508 |
| McCormick | 7 | 26 | 21 | 1 | 17 | 3 | 68 |
| Marion | 76 | 127 | 231 | 3 | 117 | 50 | 528 |
| Marlboro | 19 | 100 | 62 | 0 | 119 | 2 | 283 |
| Newberry | 1 | 16 | 32 | 0 | 128 | 6 | 182 |
| Oconee | 12 | 43 | 73 | 0 | 62 | 12 | 190 |
| Orangeburg | 19 | 235 | 205 | 7 | 513 | 76 | 1,036 |
| Pickens | 186 | 52 | 185 | 3 | 238 | 87 | 565 |
| Richland | 0 | 146 | 46 | 0 | 1,078 | 89 | 1,359 |
| Saluda | 0 | 13 | 26 | 1 | 15 | 4 | 59 |
| Spartanburg | 173 | 327 | 369 | 0 | 329 | 122 | 1,147 |
| Sumter | 49 | 88 | 172 | 5 | 113 | 48 | 426 |
| Union | 28 | 48 | 84 | 0 | 147 | 0 | 279 |
| Williamsburg | 86 | 18 | 51 | 0 | 100 | 7 | 176 |
| York | 28 | 203 | 649 | 0 | 409 | 92 | 1,353 |
| TOTAL | 5,171 | 6,073 | 8,775 | 187 | 10,568 | 1,741 | 27,344 |

*Total does not include pending and certain other administrative type decisions.

APPENDIX TABLE V
DISPOSITION of JUVENILE CASES by COUNTY
FY 2002/2003

| COUNTY | DISMISS | SCHOOL ORDER | PROBATION | COMMITMENT | OTHER | TOTAL* |
|--------------|------------|--------------|--------------|--------------|--------------|---------------|
| Abbeville | 1 | 15 | 37 | 14 | 0 | 67 |
| Aiken | 59 | 66 | 301 | 65 | 23 | 514 |
| Allendale | 1 | 18 | 55 | 10 | 5 | 89 |
| Anderson | 20 | 10 | 210 | 61 | 98 | 399 |
| Bamberg | 0 | 3 | 39 | 9 | 4 | 55 |
| Barnwell | 6 | 25 | 61 | 10 | 2 | 104 |
| Beaufort | 17 | 3 | 124 | 41 | 25 | 210 |
| Berkeley | 3 | 36 | 144 | 10 | 75 | 268 |
| Calhoun | 6 | 3 | 6 | 5 | 2 | 22 |
| Charleston | 8 | 5 | 466 | 61 | 164 | 704 |
| Cherokee | 8 | 115 | 76 | 21 | 0 | 220 |
| Chester | 1 | 0 | 32 | 16 | 1 | 50 |
| Chesterfield | 5 | 30 | 41 | 12 | 6 | 94 |
| Clarendon | 2 | 0 | 28 | 3 | 0 | 33 |
| Colleton | 8 | 22 | 75 | 9 | 14 | 128 |
| Darlington | 4 | 22 | 88 | 56 | 32 | 202 |
| Dillon | 10 | 34 | 46 | 14 | 9 | 113 |
| Dorchester | 21 | 109 | 142 | 20 | 45 | 337 |
| Edgefield | 0 | 0 | 21 | 3 | 0 | 24 |
| Fairfield | 1 | 9 | 8 | 19 | 0 | 37 |
| Florence | 23 | 14 | 115 | 26 | 8 | 186 |
| Georgetown | 23 | 2 | 102 | 12 | 11 | 150 |
| Greenville | 14 | 83 | 531 | 250 | 172 | 1,050 |
| Greenwood | 0 | 56 | 89 | 37 | 4 | 186 |
| Hampton | 6 | 29 | 27 | 10 | 0 | 72 |
| Horry | 132 | 89 | 489 | 110 | 39 | 859 |
| Jasper | 0 | 1 | 61 | 13 | 5 | 80 |
| Kershaw | 21 | 41 | 93 | 20 | 4 | 179 |
| Lancaster | 5 | 0 | 114 | 15 | 2 | 136 |
| Laurens | 3 | 44 | 112 | 31 | 2 | 192 |
| Lee | 6 | 0 | 28 | 5 | 1 | 40 |
| Lexington | 9 | 31 | 312 | 144 | 3 | 499 |
| McCormick | 0 | 0 | 13 | 2 | 1 | 16 |
| Marion | 16 | 0 | 71 | 14 | 4 | 105 |
| Marlboro | 3 | 7 | 49 | 16 | 23 | 98 |
| Newberry | 0 | 17 | 49 | 18 | 1 | 85 |
| Oconee | 1 | 1 | 62 | 5 | 5 | 74 |
| Orangeburg | 69 | 60 | 211 | 76 | 37 | 453 |
| Pickens | 0 | 86 | 147 | 41 | 35 | 309 |
| Richland | 5 | 6 | 872 | 380 | 23 | 1,286 |
| Saluda | 0 | 0 | 11 | 4 | 0 | 15 |
| Spartanburg | 14 | 11 | 284 | 49 | 41 | 399 |
| Sumter | 26 | 0 | 94 | 19 | 12 | 151 |
| Union | 3 | 0 | 111 | 6 | 2 | 122 |
| Williamsburg | 9 | 3 | 36 | 4 | 8 | 60 |
| York | 38 | 2 | 336 | 23 | 68 | 467 |
| Out of State | 0 | 0 | 12 | 69 | 55 | 136 |
| TOTAL | 607 | 1,108 | 6,431 | 1,858 | 1,071 | 11,075 |

*Total does not include all judicial sanctions, General Sessions Court cases or end of the year processing.

APPENDIX TABLE VI
RESTITUTION ACTIVITY by COUNTY/JURISDICTION
 FY 2002/2003

| COUNTY/JURISDICTION | MONETARY RESTITUTION | | | COMMUNITY SERVICE | | |
|-----------------------|----------------------|---------------------|-----------------|-------------------|----------------|--------------|
| | ORDERS | AMOUNT | AVERAGE | ORDERS | HOURS | AVERAGE |
| Abbeville | 7 | \$1,454.87 | \$207.84 | 2 | 100 | 50.00 |
| Aiken | 17 | \$22,137.66 | \$1,302.22 | 133 | 12,110 | 91.05 |
| Allendale | 21 | \$3,982.23 | \$189.63 | 23 | 1,310 | 56.96 |
| Anderson | 19 | \$20,660.11 | \$1,087.37 | 2 | 130 | 65.00 |
| Bamberg | 5 | \$1,068.75 | \$213.75 | 6 | 330 | 55.00 |
| Barnwell | 10 | \$4,585.49 | \$458.55 | 12 | 730 | 60.83 |
| Beaufort | 26 | \$30,060.02 | \$1,156.15 | 62 | 4,310 | 69.52 |
| Berkeley | 25 | \$12,382.83 | \$495.31 | 428 | 7,253 | 16.95 |
| Calhoun | 1 | \$356.25 | \$356.25 | 5 | 115 | 23.00 |
| Charleston | 110 | \$81,981.85 | \$745.29 | 144 | 3,843 | 26.69 |
| Cherokee | 12 | \$3,818.75 | \$318.23 | 64 | 1,941 | 30.33 |
| Chester | 4 | \$1,413.06 | \$353.27 | 24 | 951 | 39.63 |
| Chesterfield | 0 | \$0.00 | \$0.00 | 16 | 907 | 56.69 |
| Clarendon | 7 | \$3,346.65 | \$478.09 | 35 | 590 | 16.86 |
| Colleton | 24 | \$11,110.49 | \$462.94 | 35 | 2,035 | 58.14 |
| Darlington | 12 | \$5,878.38 | \$489.87 | 14 | 700 | 50.00 |
| Dillon | 12 | \$2,323.13 | \$193.59 | 9 | 354 | 39.33 |
| Dorchester | 32 | \$20,662.53 | \$645.70 | 82 | 4,455 | 54.33 |
| Edgefield | 2 | \$89.00 | \$44.50 | 12 | 370 | 30.83 |
| Fairfield | 4 | \$2,253.00 | \$563.25 | 2 | 100 | 50.00 |
| Florence | 31 | \$8,671.11 | \$279.71 | 74 | 2,840 | 38.38 |
| Georgetown | 18 | \$9,748.93 | \$541.61 | 130 | 3,323 | 25.56 |
| Greenville | 90 | \$43,495.27 | \$483.28 | 205 | 10,690 | 52.15 |
| Greenwood | 21 | \$3,475.22 | \$165.49 | 26 | 1,275 | 49.04 |
| Hampton | 2 | \$403.00 | \$201.50 | 6 | 305 | 50.83 |
| Horry | 24 | \$14,408.95 | \$600.37 | 197 | 5,905 | 29.97 |
| Jasper | 1 | \$403.72 | \$403.72 | 0 | 0 | 0.00 |
| Kershaw | 7 | \$3,910.33 | \$558.62 | 9 | 230 | 25.56 |
| Lancaster | 60 | \$8,116.68 | \$135.28 | 47 | 2,025 | 43.09 |
| Laurens | 6 | \$1,204.17 | \$200.70 | 7 | 210 | 30.00 |
| Lee | 1 | \$267.00 | \$267.00 | 2 | 80 | 40.00 |
| Lexington | 32 | \$11,863.45 | \$370.73 | 116 | 3,075 | 26.51 |
| McCormick | 2 | \$600.00 | \$300.00 | 8 | 185 | 23.13 |
| Marion | 19 | \$9,981.32 | \$525.33 | 52 | 1,954 | 37.58 |
| Marlboro | 11 | \$6,032.30 | \$548.39 | 6 | 128 | 21.33 |
| Newberry | 10 | \$1,778.15 | \$177.82 | 4 | 80 | 20.00 |
| Oconee | 20 | \$23,985.12 | \$1,199.26 | 6 | 240 | 40.00 |
| Orangeburg | 18 | \$13,086.90 | \$727.05 | 64 | 2,075 | 32.42 |
| Pickens | 13 | \$4,183.36 | \$321.80 | 46 | 1,055 | 22.93 |
| Richland | 37 | \$22,048.04 | \$595.89 | 522 | 14,610 | 27.99 |
| Saluda | 5 | \$4,088.71 | \$817.74 | 5 | 115 | 23.00 |
| Spartanburg | 32 | \$20,568.80 | \$642.78 | 119 | 3,412 | 28.67 |
| Sumter | 58 | \$29,808.41 | \$513.94 | 46 | 1,426 | 31.00 |
| Union | 14 | \$9,431.04 | \$673.65 | 29 | 580 | 20.00 |
| Williamsburg | 4 | \$1,213.00 | \$303.25 | 33 | 1,140 | 34.55 |
| York | 35 | \$14,181.92 | \$405.20 | 132 | 2,113 | 16.01 |
| Juvenile Parole Board | 55 | \$61,510.14 | \$1,118.37 | 1 | 40 | 40.00 |
| TOTAL | 976 | \$558,030.10 | \$571.75 | 3002 | 101,746 | 33.89 |

APPENDIX TABLE VII
COMMITMENTS by COUNTY
FY 2002/2003

| COUNTY | EVALUATION COMMITMENTS | | FINAL COMMITMENTS | |
|---------------|-------------------------------|-------------------|--------------------------|-------------------|
| | NUMBER | % OF TOTAL | NUMBER | % OF TOTAL |
| Abbeville | 9 | 0% | 19 | 1% |
| Aiken | 97 | 4% | 75 | 4% |
| Allendale | 17 | 1% | 11 | 1% |
| Anderson | 92 | 4% | 73 | 3% |
| Bamberg | 17 | 1% | 14 | 1% |
| Barnwell | 26 | 1% | 15 | 1% |
| Beaufort | 76 | 3% | 66 | 3% |
| Berkeley | 57 | 2% | 19 | 1% |
| Calhoun | 1 | 0% | 9 | 0% |
| Charleston | 108 | 5% | 84 | 4% |
| Cherokee | 25 | 1% | 24 | 1% |
| Chester | 17 | 1% | 18 | 1% |
| Chesterfield | 19 | 1% | 13 | 1% |
| Clarendon | 8 | 0% | 5 | 0% |
| Colleton | 28 | 1% | 10 | 0% |
| Darlington | 30 | 1% | 68 | 3% |
| Dillon | 16 | 1% | 18 | 1% |
| Dorchester | 42 | 2% | 24 | 1% |
| Edgefield | 10 | 0% | 7 | 0% |
| Fairfield | 5 | 0% | 27 | 1% |
| Florence | 34 | 1% | 30 | 1% |
| Georgetown | 36 | 2% | 15 | 1% |
| Greenville | 258 | 11% | 283 | 13% |
| Greenwood | 46 | 2% | 42 | 2% |
| Hampton | 16 | 1% | 14 | 1% |
| Horry | 154 | 7% | 142 | 7% |
| Jasper | 24 | 1% | 19 | 1% |
| Kershaw | 27 | 1% | 22 | 1% |
| Lancaster | 40 | 2% | 18 | 1% |
| Laurens | 51 | 2% | 42 | 2% |
| Lee | 10 | 0% | 6 | 0% |
| Lexington | 129 | 6% | 170 | 8% |
| McCormick | 7 | 0% | 6 | 0% |
| Marion | 29 | 1% | 19 | 1% |
| Marlboro | 17 | 1% | 22 | 1% |
| Newberry | 44 | 2% | 20 | 1% |
| Oconee | 20 | 1% | 5 | 0% |
| Orangeburg | 91 | 4% | 83 | 4% |
| Pickens | 60 | 3% | 41 | 2% |
| Richland | 290 | 12% | 354 | 17% |
| Saluda | 3 | 0% | 5 | 0% |
| Spartanburg | 108 | 5% | 65 | 3% |
| Sumter | 29 | 1% | 23 | 1% |
| Union | 20 | 1% | 8 | 0% |
| Williamsburg | 13 | 1% | 8 | 0% |
| York | 55 | 2% | 35 | 2% |
| Out of State | 19 | 1% | 13 | 1% |
| TOTAL | 2,330 | 100% | 2,109 | 100% |

**APPENDIX TABLE VIII
DETENTION and COMMITMENT RATES by COUNTY
FY 2002/2003**

| COUNTY | All Juveniles Ages 10 - 16* | JUVENILES DETAINED | | JUVENILES COMMITTED | |
|--------------|--------------------------------|--------------------|----------------|---------------------|----------------|
| | | Number | Rate per 1,000 | Number | Rate per 1,000 |
| Abbeville | 2,681 | 12 | 4 | 19 | 7 |
| Aiken | 14,974 | 68 | 5 | 75 | 5 |
| Allendale | 1,184 | 49 | 41 | 11 | 9 |
| Anderson | 15,986 | 294 | 18 | 73 | 5 |
| Bamberg | 1,736 | 16 | 9 | 14 | 8 |
| Barnwell | 2,780 | 17 | 6 | 15 | 5 |
| Beaufort | 10,516 | 74 | 7 | 66 | 6 |
| Berkeley | 16,361 | 174 | 11 | 19 | 1 |
| Calhoun | 1,554 | 4 | 3 | 9 | 6 |
| Charleston | 29,306 | 873 | 30 | 84 | 3 |
| Cherokee | 5,236 | 30 | 6 | 24 | 5 |
| Chester | 3,725 | 53 | 14 | 18 | 5 |
| Chesterfield | 4,584 | 9 | 2 | 13 | 3 |
| Clarendon | 3,590 | 29 | 8 | 5 | 1 |
| Colleton | 4,310 | 31 | 7 | 10 | 2 |
| Darlington | 6,809 | 83 | 12 | 68 | 10 |
| Dillon | 3,656 | 25 | 7 | 18 | 5 |
| Dorchester | 11,860 | 99 | 8 | 24 | 2 |
| Edgefield | 2,455 | 7 | 3 | 7 | 3 |
| Fairfield | 2,459 | 18 | 7 | 27 | 11 |
| Florence | 13,415 | 84 | 6 | 30 | 2 |
| Georgetown | 5,866 | 29 | 5 | 15 | 3 |
| Greenville | 36,160 | 822 | 23 | 283 | 8 |
| Greenwood | 6,529 | 65 | 10 | 42 | 6 |
| Hampton | 2,475 | 31 | 13 | 14 | 6 |
| Horry | 16,404 | 236 | 14 | 142 | 9 |
| Jasper | 2,116 | 44 | 21 | 19 | 9 |
| Kershaw | 5,700 | 63 | 11 | 22 | 4 |
| Lancaster | 6,167 | 77 | 12 | 18 | 3 |
| Laurens | 7,158 | 46 | 6 | 42 | 6 |
| Lee | 2,091 | 4 | 2 | 6 | 3 |
| Lexington | 22,406 | 130 | 6 | 170 | 8 |
| McCormick | 873 | 5 | 6 | 6 | 7 |
| Marion | 3,969 | 27 | 7 | 19 | 5 |
| Marlboro | 3,062 | 41 | 13 | 22 | 7 |
| Newberry | 3,465 | 30 | 9 | 20 | 6 |
| Oconee | 6,062 | 19 | 3 | 5 | 1 |
| Orangeburg | 9,748 | 92 | 9 | 83 | 9 |
| Pickens | 9,659 | 87 | 9 | 41 | 4 |
| Richland | 30,893 | 296 | 10 | 354 | 11 |
| Saluda | 1,881 | 14 | 7 | 5 | 3 |
| Spartanburg | 24,610 | 389 | 16 | 65 | 3 |
| Sumter | 11,714 | 70 | 6 | 23 | 2 |
| Union | 2,827 | 21 | 7 | 8 | 3 |
| Williamsburg | 4,525 | 10 | 2 | 8 | 2 |
| York | 17,427 | 172 | 10 | 35 | 2 |
| Out of State | | | | 13 | |
| TOTAL | 402,964 | 4,869 | 12 | 2,109 | 5 |

*Population Census Data provided by SC Data Center April 1, 2000.